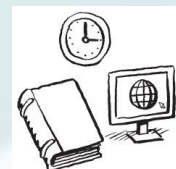


# Dublin City Council – In Profile



## Voter Turnout

- 42.63% in 2014 (140,256 voters)



## Recreation and Amenities

- Highest Expenditure on Recreation and Amenities in 2018



## Budget

- Spent €917m in 2018
- €1,654 per person



## Environmental Services

- Highest Expenditure on Environmental Services in 2018



## Housing

- 3,968 'social housing solutions'
- 63% Housing Assistance Payment
- 21% 'Builds'



## Local Representation

- 63 Local Representatives
- Spent €82.6k per Representative on Civic Engagement in 2018
- PPN active in the community



## Roads and Transport (Whole County)

- 82km motorway, 41km dual carriageway, 16km single
- 24 road fatalities and 2,210 injuries



## Development Management

- 445 gross LEO job gains in 2017
- 248 net LEO job gains in 2017
- 100% broadband coverage (commercial operators)



## Water Services

- 6 Public Water Supplies
- Almost 100% Water Quality Compliance



## Climate Change

- No climate change specific budget allocation in 2018