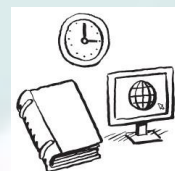


Longford County Council – In Profile



Voter Turnout

- 63.72% in 2014 (19,845 voters)



Recreation and Amenities

- 30th for Expenditure on Recreation and Amenities in 2018



Budget

- Spent €42.8m in 2018
- €1,048 per person



Environmental Services

- 30th Expenditure on Environmental Services in 2018



Housing

- 326 'social housing solutions'
- 61% Housing Assistance Payment
- 17% 'Builds'



Local Representation

- 18 Local Representatives
- Spent €54.7k per Representative on Civic Engagement in 2018
- PPN active in the community



Roads and Transport

- 97km single carriageway
- 2 road fatalities and 112 injuries



Development Management

- 177 gross LEO job gains in 2017
- 111 net LEO job gains in 2017
- 66% broadband coverage (commercial operators)



Water Services

- 6 Public Water Supplies
- Almost 100% Water Quality Compliance



Climate Change

- No specific allocation for climate change in 2018