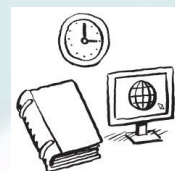


# Louth County Council – In Profile



## Voter Turnout

- 49.35% in 2014 (45,831 voters)



## Recreation and Amenities

- 18<sup>th</sup> for Expenditure on Recreation and Amenities in 2018



## Budget

- Spent €103.2m in 2018
- €800 per person



## Environmental Services

- 14<sup>th</sup> Expenditure on Environmental Services in 2018



## Housing

- 1,229 'social housing solutions'
- 79% Housing Assistance Payment
- 14% 'Builds'



## Local Representation

- 29 Local Representatives
- Spent €32.6k per Representative on Civic Engagement in 2018
- PPN active in the community



## Roads and Transport

- 40km motorway, 9km dual carriageway, 49km single carriageway
- 10 road fatalities and 231 injuries



## Development Management

- 200 gross LEO job gains in 2017
- 118 net LEO job gains in 2017
- 85% broadband coverage (commercial operators)



## Water Services

- 14 Public Water Supplies
- Almost 100% Water Quality Compliance



## Climate Change

- No specific allocation for climate change in 2018