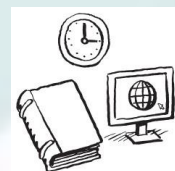


Meath County Council – In Profile



Voter Turnout

- 45.3% in 2014 (63,544 voters)



Recreation and Amenities

- 21st for Expenditure on Recreation and Amenities in 2018



Budget

- Spent €110.7m in 2018
- €567 per person



Environmental Services

- 15th for Expenditure on Environmental Services in 2018



Housing

- 1,204 'social housing solutions'
- 63% Housing Assistance Payment
- 28% 'Builds'



Local Representation

- 40 Local Representatives
- Spent €67.4k per Representative on Civic Engagement in 2018
- PPN active in the community



Roads and Transport

- 88km motorway, 12km dual carriageway, 104km single
- 8 road fatalities and 282 injuries



Development Management

- 284 gross LEO job gains in 2017
- 162 net LEO job gains in 2017
- 71% broadband coverage (commercial operators)



Water Services

- 36 Public Water Supplies
- Almost 100% Water Quality Compliance



Climate Change

- No specific allocation for climate change in 2018