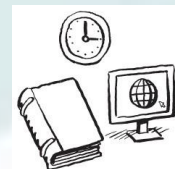


South Dublin County Council - In Profile



Voter Turnout

- 42.07% in 2014 (77,956 voters)



Recreation and Amenities

- 3rd for Expenditure on Recreation and Amenities in 2018



Budget

- Spent €232.4m in 2018
- €833 per person



Environmental Services

- 4th for Expenditure on Environmental Services in 2018



Housing

- 1,787 'social housing solutions'
- 64% Housing Assistance Payment
- 28% 'Builds'



Local Representation

- 40 Local Representatives
- Spent €34.8k per Representative on Civic Engagement in 2018
- PPN active in the community



Roads and Transport (Whole County)

- 82km motorway, 41km dual carriageway, 16km single
- 24 road fatalities and 2,210 injuries



Development Management

- 351 gross LEO job gains in 2017
- 132 net LEO job gains in 2017
- 99-100% broadband coverage (commercial operators)



Water Services

- 4 Public Water Supplies
- 100% Water Quality Compliance



Climate Change

- No specific climate change allocation in 2018