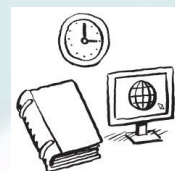


Westmeath County Council – In Profile



Voter Turnout

- 51.77% in 2014 (35,239 voters)



Recreation and Amenities

- 16th for Expenditure on Recreation and Amenities in 2018



Budget

- Spent €71.2m in 2018
- €802 per person



Environmental Services

- 25th for Expenditure on Environmental Services in 2018



Housing

- 509 'social housing solutions'
- 71% Housing Assistance Payment
- 3% 'Builds'



Local Representation

- 20 Local Representatives
- Spent €50.8k per Representative on Civic Engagement in 2018
- PPN active in the community



Roads and Transport

- 56km motorway, 18km dual carriageway, 102km single
- 1 road fatality and 166 injuries



Development Management

- 300 gross LEO job gains in 2017
- 129 net LEO job gains in 2017
- 66% broadband coverage (commercial operators)



Water Services

- 10 Public Water Supplies
- Almost 100% Water Quality Compliance



Climate Change

- No specific allocation for climate change in 2018