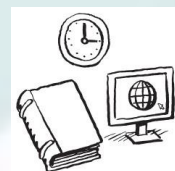


Wexford County Council – In Profile



Voter Turnout

- 50.2% in 2014 (55,734 voters)



Recreation and Amenities

- 15th for Expenditure on Recreation and Amenities in 2018



Budget

- Spent €109.5m in 2018
- €731 per person



Environmental Services

- 17th for Expenditure on Environmental Services in 2018



Housing

- 920 'social housing solutions'
- 68% Housing Assistance Payment
- 13% 'Builds'



Local Representation

- 34 Local Representatives
- Spent €44.1k per Representative on Civic Engagement in 2018
- PPN active in the community



Roads and Transport

- 22km motorway, 142km single
- 7 road fatalities and 218 injuries



Development Management

- 238 gross LEO job gains in 2017
- 143 net LEO job gains in 2017
- 72% broadband coverage (commercial operators)



Water Services

- 52 Public Water Supplies
- Almost 100% Water Quality Compliance



Climate Change

- No specific allocation for climate change in 2018