



working to build a just society

Social Rights in Ireland

Colette Bennett
Economic and Social Analyst
Social Justice Ireland

Poverty and Social Inclusion

EU-28 and Ireland, Key Poverty Indicators, 2008 and 2019

Poverty Indicators								
	People at risk of poverty or social exclusion		People at risk of poverty (60% threshold)		People experiencing Severe Material Deprivation		People in households with very low work intensity	
	Number	%	Number	%	Number	%	Number	%
EU-28 Total population								
2008**	116m	23.7	80.9m	16.6	41.5m	8.5	34.6m	9.2
2019	107.5m	21.4	84.5m	16.8	27.5m	5.5	31.3m	8.5
Ireland Total population								
2008	1.05m	23.7	686,000	15.5	245,000	5.5	509,000	13.7
2019	1.01m	20.6	645,000	13.3	267,000	5.4	534,000	13.6
EU-28 Children (under 18)								
2008**	25m	26.5	19.2m	20.4	9.3m	9.8	7.3m	7.8
2019	22.2m	23.4	18.7m	19.4	5.7m	6.0	6.6m	7.0
Ireland Children (under 18)								
2008	309,000	26.6	209,000	18.0	78,000	6.8	174,000	15.1
2019	290,000	23.2	176,000	14.1	86,000	6.9	185,000	14.8
EU-28 Older people (over 65s)								
2008**	19.2m	23.3	15.6m	18.9	6.1m	7.5	n/a	n/a
2019	18.3m	18.6	15.6m	15.9	4.6m	4.7		
Ireland Older people (over 65s)								
2008	109,000	22.5	102,000	21.1	11,000	2.2	n/a	n/a
2019	136,000	19.4	127,000	18.1	14,000	1.9		

Source: Eurostat Online Databases: t2020_50, t2020_51, t2020_52, t2020_53, ilc_lvhl11, ilc_li02, ilc_mddd11, ilc_peps01

© Social Justice Ireland

W: www.socialjustice.ie T: @SocialJusticeI F: fb.me/SocialJusticeI

Poverty and Social Inclusion

- In 2008, the no. of people at risk of poverty or social exclusion was 1.05 million. In 2019, it was 1.01 million.
- In 2019, 1 in every 5 people were at risk of poverty or social exclusion.
- In 2019, 645,000 people lived at risk of poverty, incl. over 200,000 children.
- Between 2008 and 2019 – peaks and troughs.
- Importance of welfare policy.

Poverty and Social Inclusion

Incidence of Persons Below 60% of Median Income by Principal Economic Status, 2003-2019

	2003	2006	2009	2012	2015	2019
At work	16.0	16.1	14.3	12.2	13.7	15.4
Unemployed	7.6	8.3	12.9	19.2	14.2	10.9
Students/school	8.6	15.0	14.6	14.2	15.4	10.6
On home duties	22.5	18.4	18.0	15.5	14.8	13.4
Retired	9.0	5.8	4.7	5.9	7.3	9.9
Ill/disabled	9.1	8.0	6.4	7.3	8.4	12.3
Children (under 16 years)	25.3	26.6	27.6	23.8	24.3	26.1
Others	1.9	1.8	1.5	1.9	1.9	1.4
Total	100.0	100.0	100.0	100.0	100.0	100.0

Employment

Ireland's Labour Force Data and Covid-19 Impact, 2019–2020

	2019	2020	Dec 2020-Covid	Covid - impact
Labour Force	2,471,700	2,445,100		
LFPR %	62.7	61.3		
Employment %	70.2	67.8	57.5	- 10
Employment	2,361,200	2,306,200	1,970,609	- 335,591
Full-time	1,868,300	1,871,200		
Part-time	492,900	434,900		
Underemployed	108,400	101,400		
Unemployed %	4.5	5.7	19.4	+ 14
Unemployed	110,600	138,900	468,655	+ 329,755
LT Unemployed %	1.6	1.5		
LT Unemployed	38,700	36,800		
Potential Additional LF	98,700	162,500		

CSO, LFS Quarter 4 2020 and associated releases (CSO, 2021)

© Social Justice Ireland

W: www.socialjustice.ie T: @SocialJusticeI F: fb.me/SocialJusticeI

Employment

Change in Total Hours Worked, Q4 2019- Q4 2020

	2019	2020	Change	% Change
All Employment	77.4m	70.8m	-6.6m	-8.5%
By economic sector:				
Accommodation and food service	5.1m	2.4m	-2.7m	-52.9%
Other activities (cultural and recreational)	3.3m	2.1m	-1.2m	-36.4%
Administrative and support services	3.5m	2.3m	-1.2m	-34.3%
Transportation and storage	3.7m	3.2m	-0.5m	-13.5%
Construction	5.5m	4.8m	-0.7m	-12.7%
Wholesale and retail	9.5m	9.0m	-0.5m	-5.3%
Human health and social work	8.9m	8.5m	-0.4m	-4.5%
Education	5.1m	5.0m	-0.1m	-2.0%
Financial, insurance and real estate	4.1m	4.1m	0.0m	0.0%
Professional, scientific and technical	4.9m	4.9m	0.0m	0.0%
Information and communication	4.7m	4.8m	0.1m	+2.1%
Agriculture, forestry and fishing	4.6m	4.7m	0.1m	+2.2%
Public administration and defence	4.0m	4.1m	0.1m	+2.5%
Industry	10.3m	10.7m	0.4m	+3.9%

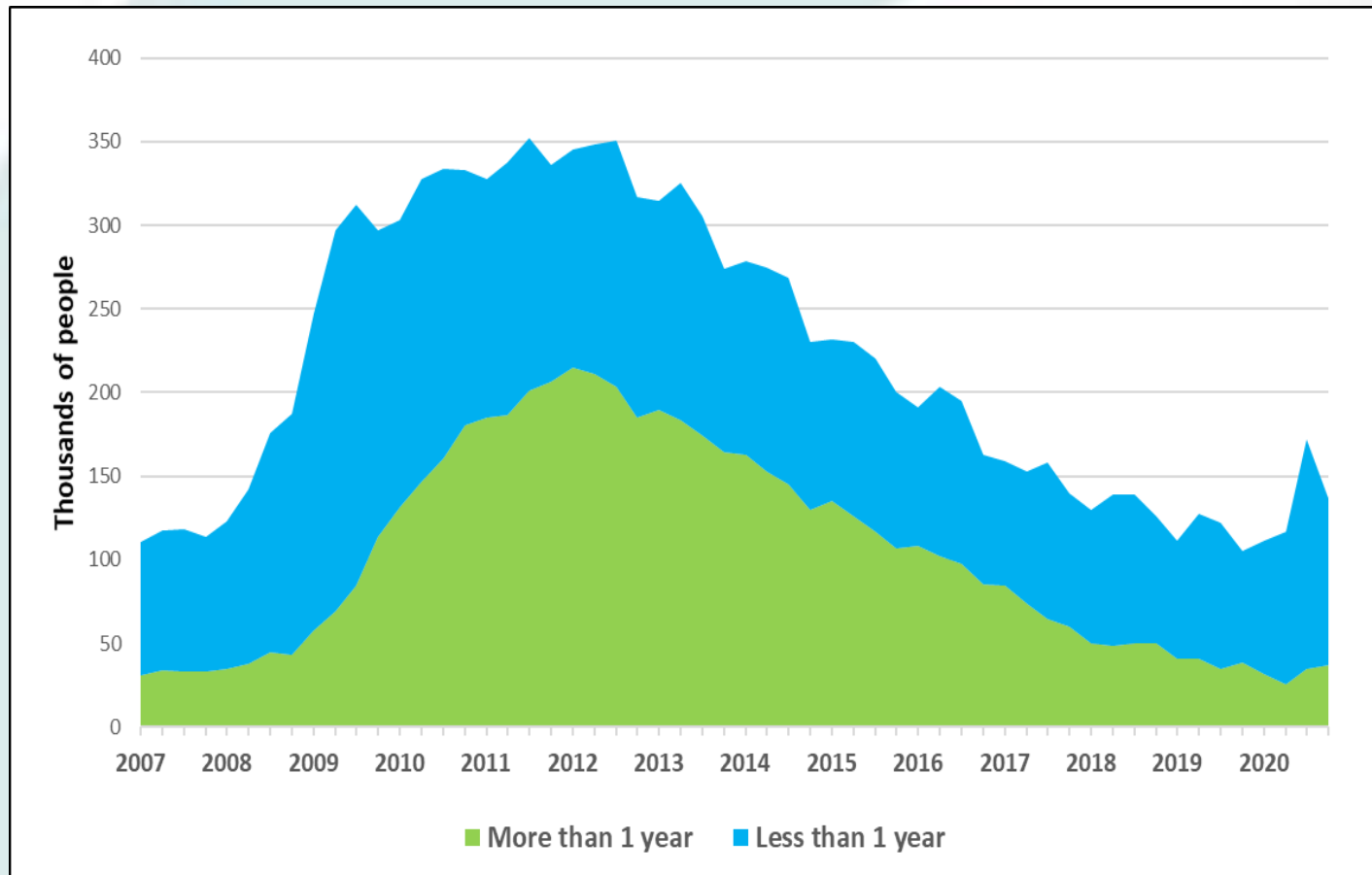
CSO Labour Market Insight Bulletin, Series 5 Q4 2020 – Feb 2021

© Social Justice Ireland

W: www.socialjustice.ie T: @SocialJusticeI F: fb.me/SocialJusticeI

Employment

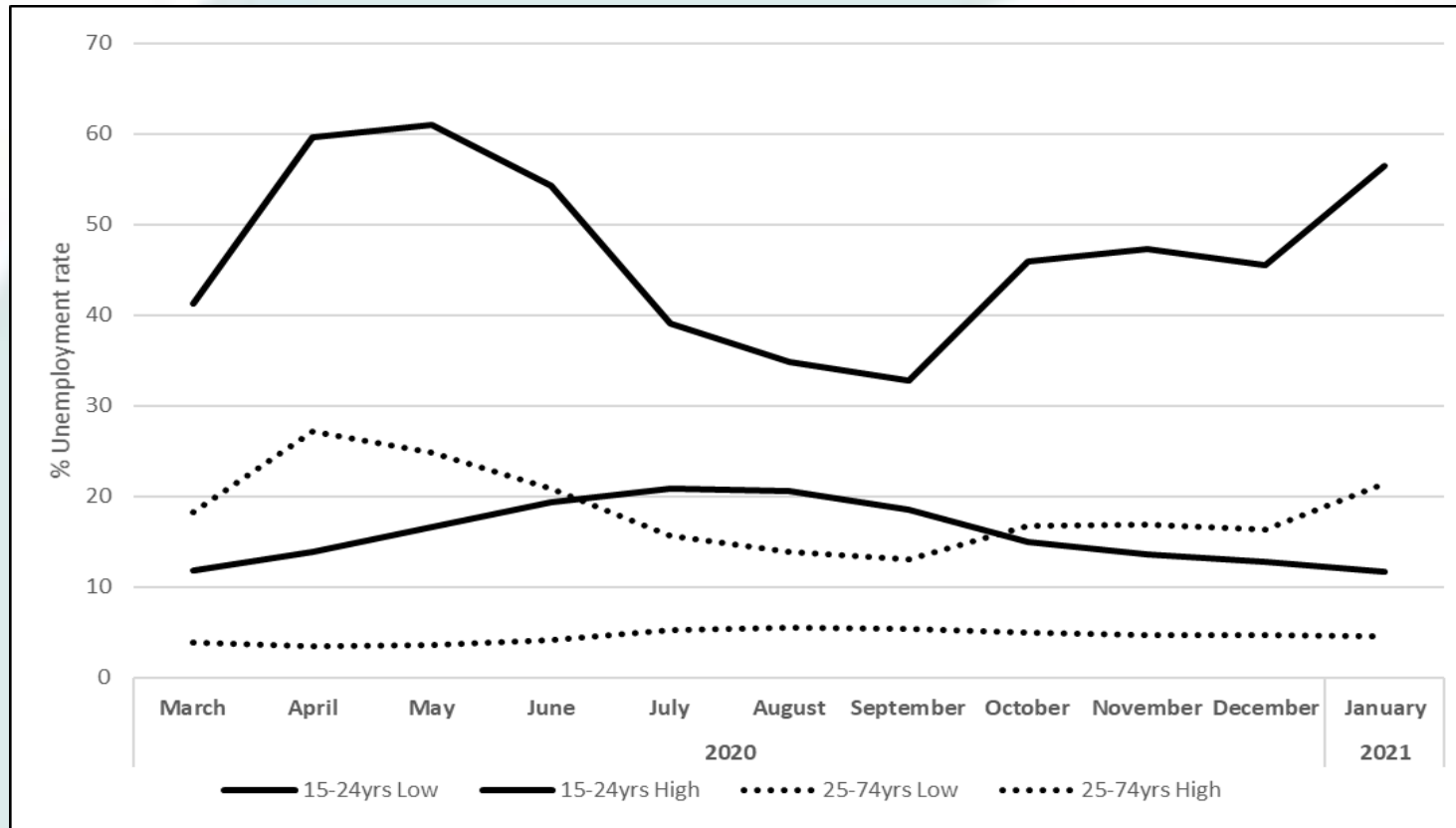
Long-Term Unemployment in Ireland, 2007-2020



CSO, LFS on-line database

Employment

Estimated Unemployment Rates during Covid-19, 2020-2021



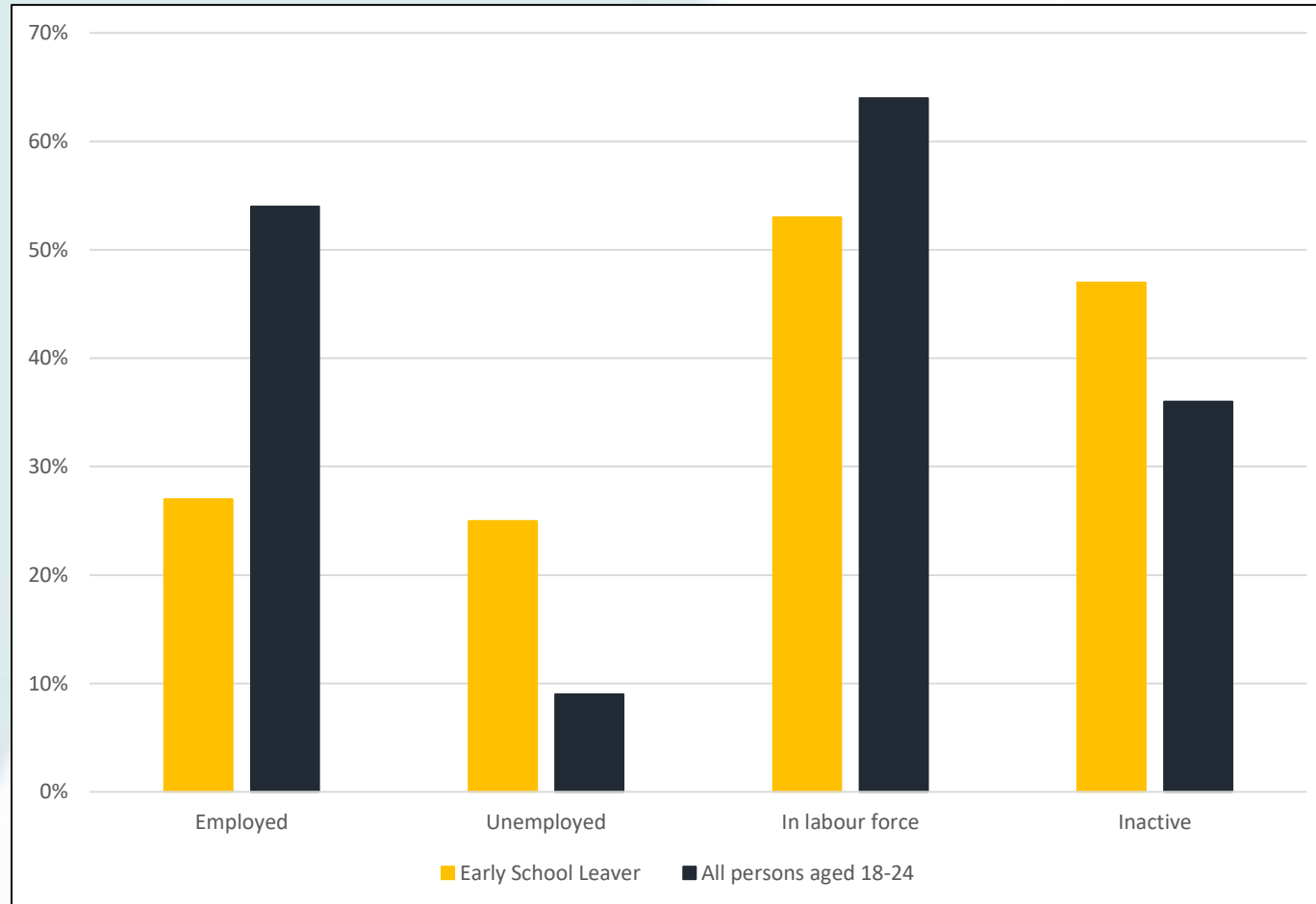
CSO on-line database, Monthly Unemployment estimates

© Social Justice Ireland

W: www.socialjustice.ie T: @SocialJusticeI F: fb.me/SocialJusticeI

Education

Labour Market Status for Early School Leavers and total population 18-24 year olds, Q2 2019



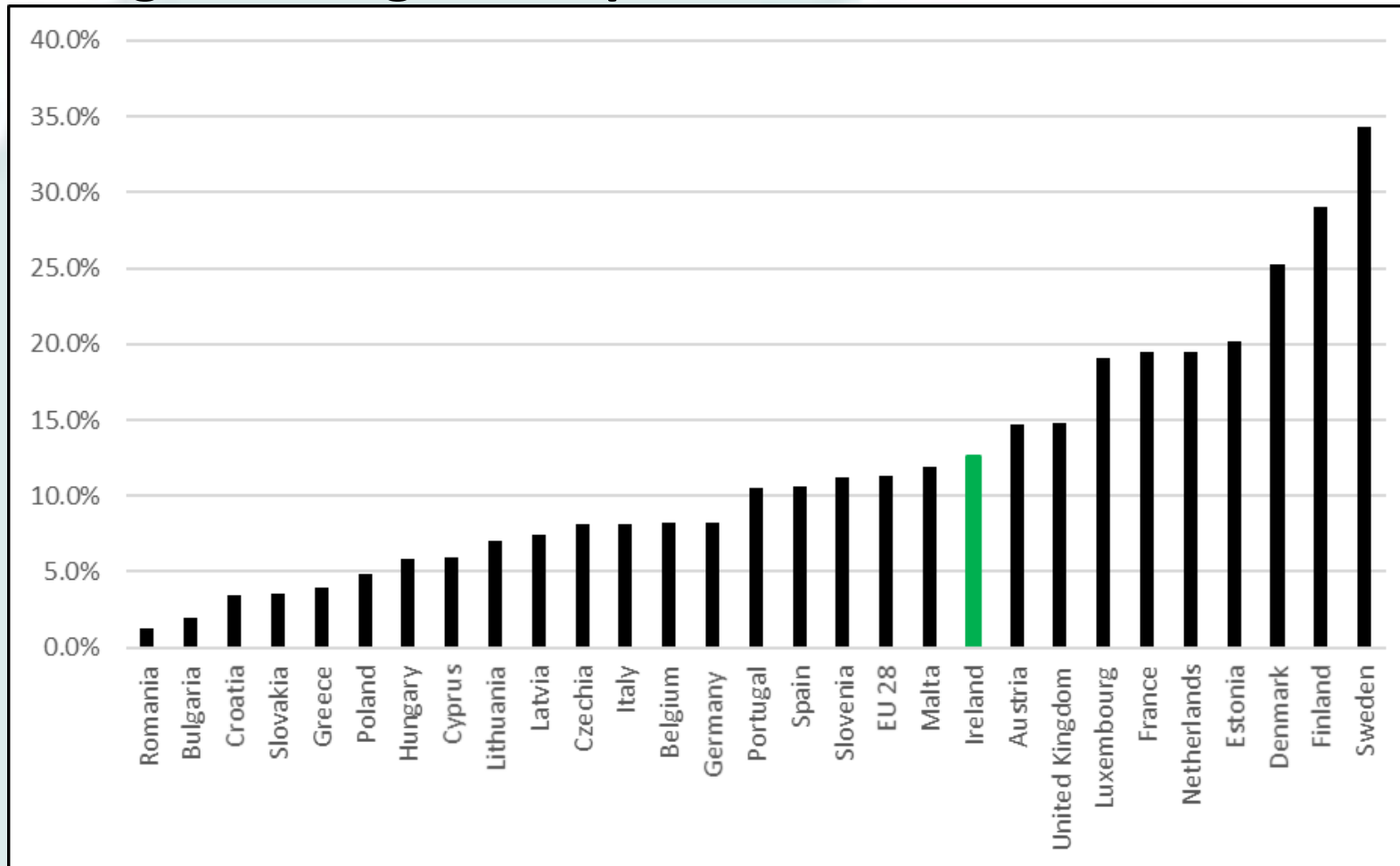
CSO, 2019

Education

- Higher Education enrolment rates increased 33% in last decade
- Projected to reach 222,514 by 2030
- Funding remains a challenge

Education

EU-28 Lifelong Learning Participation Rates, 2019



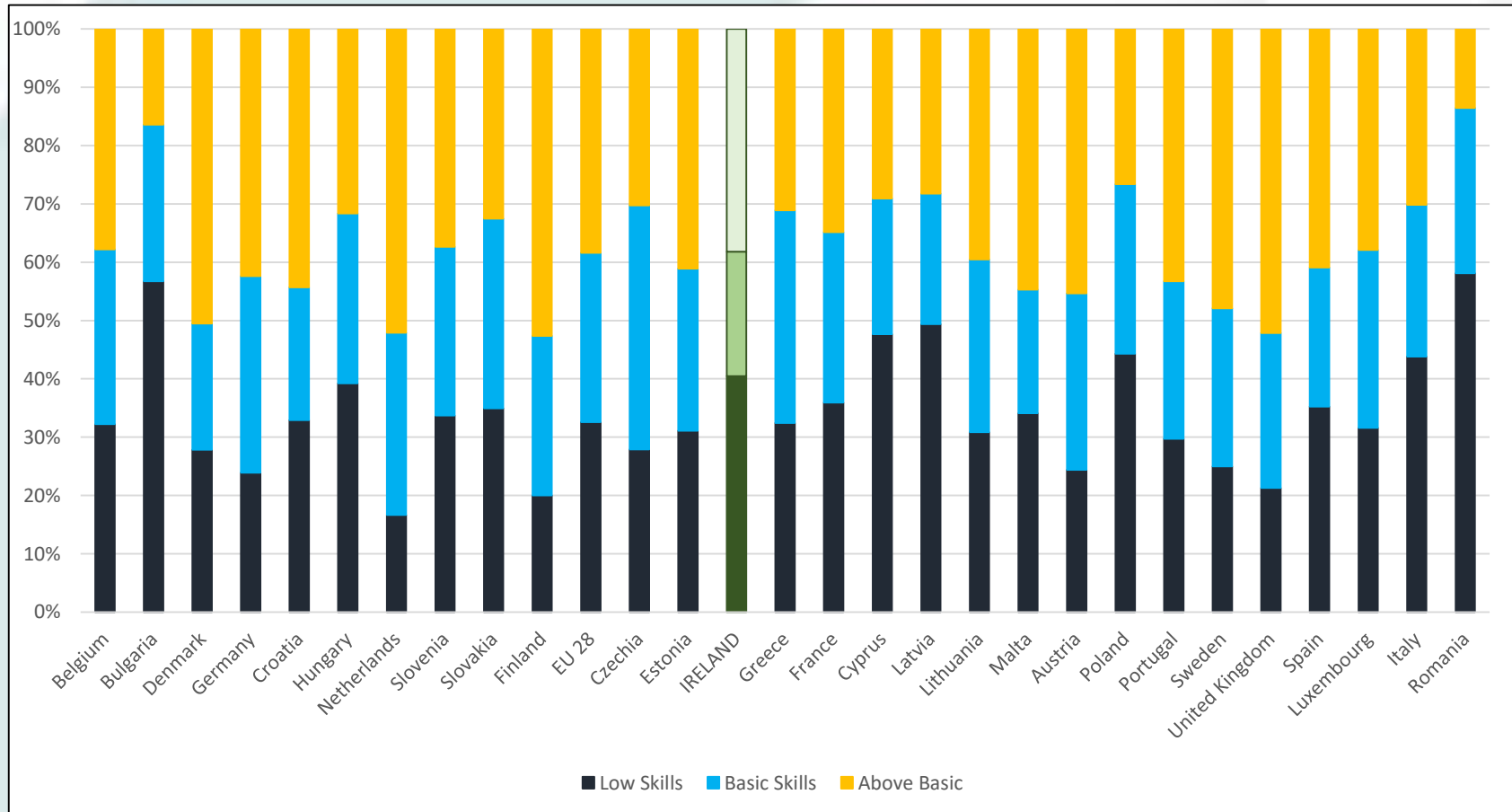
Eurostat, 2021

© Social Justice Ireland

W: www.socialjustice.ie T: @SocialJusticeI F: fb.me/SocialJusticeI

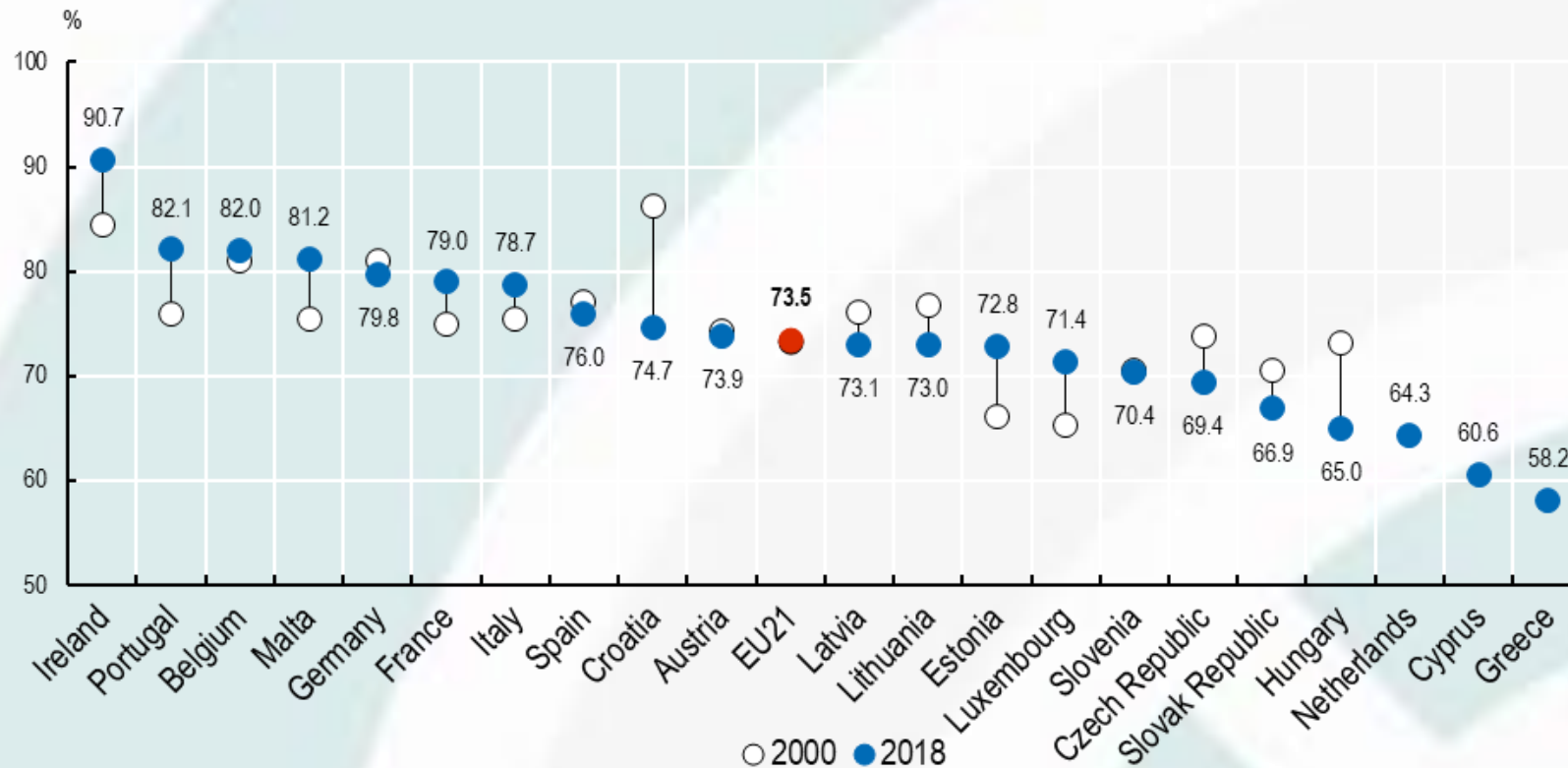
Education

EU-28 Digital Skills Levels, 2019



Health

Occupancy Rate of Curative (acute) Care Beds, 2000 and 2018 (or nearest year)



© Social Justice Ireland / OECD/European Union (2020) from OECD Health Statistics 2020 Eurostat Database.

W: www.socialjustice.ie T: @SocialJusticeI F: fb.me/SocialJusticeI

Health

Waiting Lists for Outpatient and Inpatient/Day Case, 2014-2020

	Dec 2014	Nov 2016	Nov 2018	Nov 2020	March 2021
Outpatients					
Total waiting	385,781	440,629	515,360	612,576	628,756
Waiting 18+ months	20,474	29,478	88,361	156,955	178,064
Inpatient/Day Case Active Waiting List*					
Total waiting	63,105	81,103	70,989	72,843	35,634
Waiting 18+ months	566	4,001	5,413	8,629	2,331

National Treatment Purchase Fund (2020)

Taxation

Projected Age-Related Expenditure, 2020-2070

Expenditure areas	2020	2030	2040	2050	2060	2070
% GDP						
Gross Public Pensions	5.1	5.8	6.7	7.4	7.2	6.6
of which:						
Social protection pensions	3.8	4.3	5.2	6.1	6.3	6.0
Public service pensions	1.3	1.5	1.5	1.4	0.9	0.6
Health care	4.3	4.6	4.9	5.1	5.2	5.1
Long-term care	1.4	1.7	2.1	2.7	3.1	3.3
Education	3.5	3.6	3.2	3.4	3.5	3.3
Unemployment benefits	0.8	0.9	0.9	0.9	0.9	0.9
Total age-related spending	15.1	16.6	17.8	19.6	19.9	19.2
% GNI*						
Gross Public Pensions	8.0	9.1	10.5	11.7	11.3	10.3
of which:						
Social protection pensions	6.0	6.8	8.1	9.5	9.9	9.4
Public service pensions	2.0	2.3	2.4	2.2	1.5	1.0
Health care	6.6	7.2	7.7	8.0	8.2	8.2
Long-term care	2.2	2.7	3.4	4.0	4.7	5.1
Education	5.6	5.6	5.0	5.3	5.5	5.2
Unemployment benefits	1.2	1.4	1.4	1.4	1.4	1.4
Total age-related spending	23.6	26.0	28.0	30.4	31.2	30.3

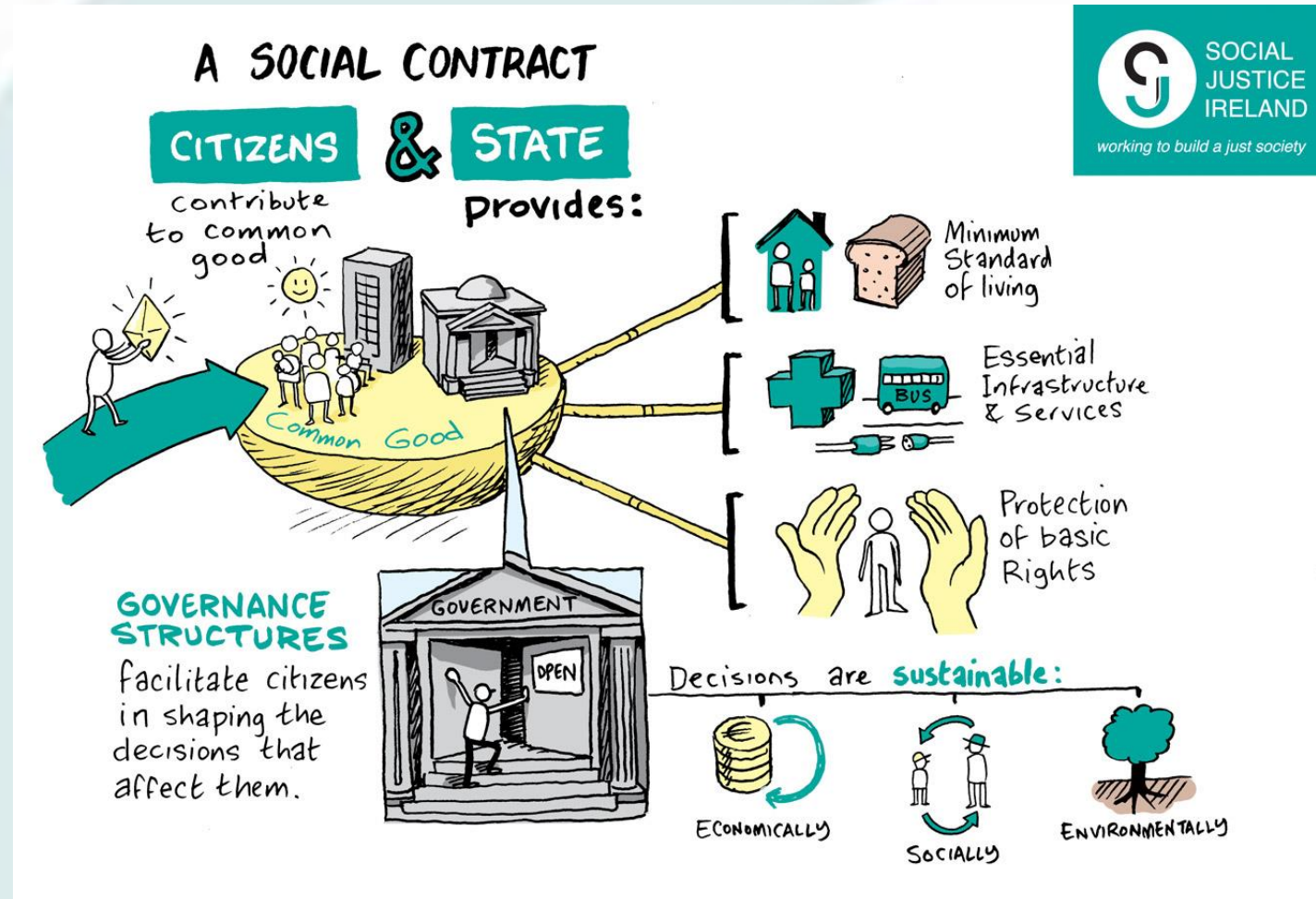
Delivering Social Rights for Ireland

Seven Basic Rights

- sufficient income to live with dignity
- meaningful work
- appropriate accommodation
- relevant education
- essential healthcare
- to real participation
- cultural respect

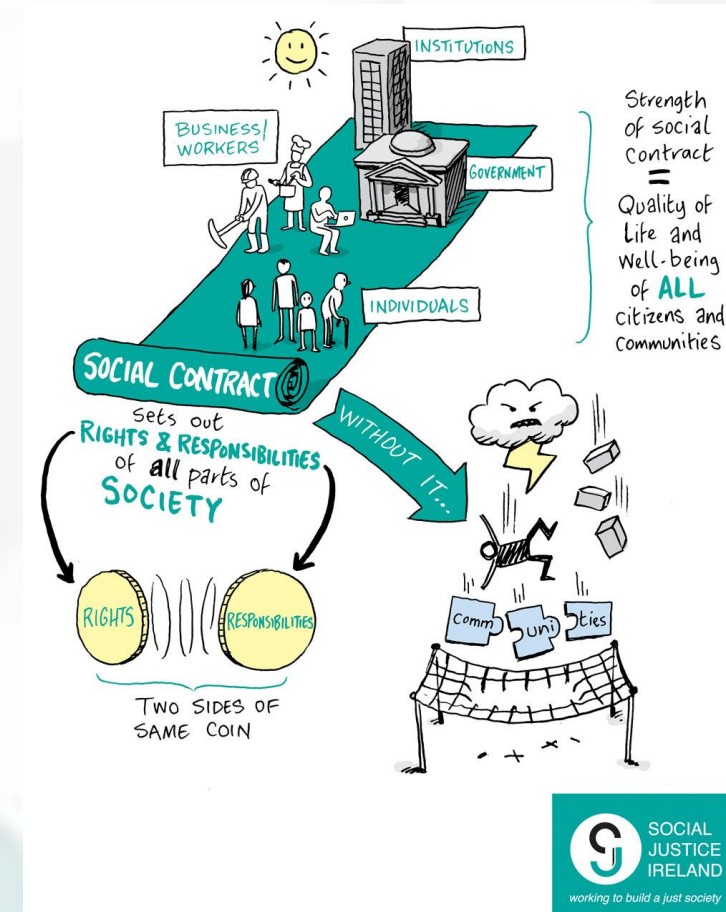


Delivering Social Rights for Ireland



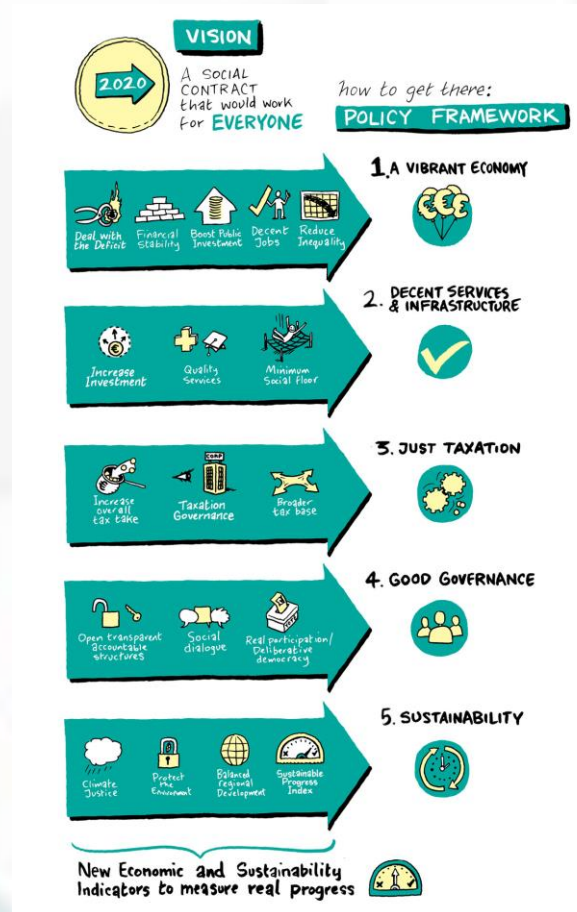
Delivering Social Rights for Ireland

- Prioritise Investment
- Implement the European Pillar of Social Rights
- Strengthen Welfare Systems
- Adopt Effective Labour Market Measures
- Tackle Low Pay by supporting the Living Wage concept and moving toward a Basic Income System
- Develop Sustainable Approaches to taxation and increase the tax take



Delivering Social Rights for Ireland

- Tackle Tax Evasion
- Consider how Government could become an employer of last resort
- Ensure Inclusive Governance and promote Social Dialogue
- Poverty Proofing and Monitoring
- Avail of the social investment aspects of the programming of EU funds
- Commit to appropriate regional strategies that ensure that investment is balanced between the regions



Questions?



SOCIAL
JUSTICE
IRELAND

working to build a just society

Thank You

colette.bennett@socialjustice.ie

© Social Justice Ireland

W: www.socialjustice.ie T: [@SocialJusticel](https://twitter.com/SocialJusticel) F: [fb.me/SocialJusticel](https://facebook.com/SocialJusticel)