



SOCIAL
JUSTICE
IRELAND

working to build a just society

Budget Choices 2024

Pre-Budget Submission, Budget 2024

Social Justice Ireland

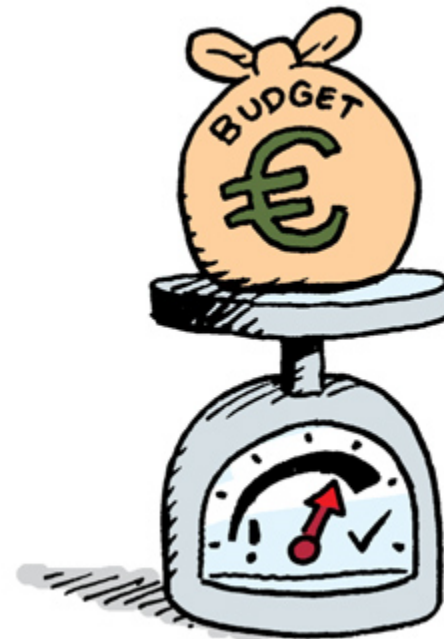
#SocialJusticeMatters
#Budget2024

© Social Justice Ireland

W: www.socialjustice.ie T: [@SocialJusticeIreland](https://www.instagram.com/SocialJusticeIreland) F: [fb.me/SocialJusticeIreland](https://www.facebook.com/SocialJusticeIreland)

Context

- Persistent Inflation
- Migration
- Increased Poverty and Inequality
- ‘Windfall’ Surpluses
- Full Employment



Social and Economic Position – Budget 2024

- Migration
- Insecurity
- Existing Challenges
 - Poverty
 - Homelessness
 - Demographic Change
 - Low tax-take
 - Inferior services



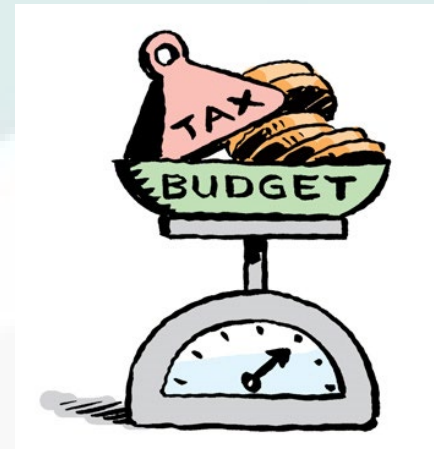
Fiscal Stance (p3-4)

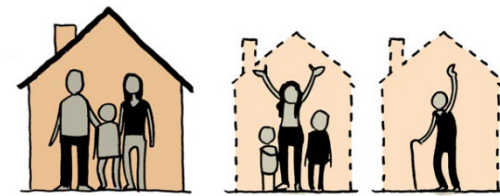
- Uncertainty Continues
 - Persistent Poverty
 - High employment, but persistent low pay
 - Inflation
- We cannot afford another missed opportunity
- Welfare, investment and long-term planning



Taxation (p5 to 7)

- Minimum Effective Rate of Corporation Tax - **€1,000m**
- Standard rate pension-related tax reliefs - **€599m**
- Standard rate discretionary non-pension tax reliefs - **€152m**
- Increase both CGT and CAT from 33% to 35% - **€176m**
- Increase the in-shop and online betting tax to 3% - **€50m**
- Reverse the VAT reduction for the hospitality sector—**€375m**



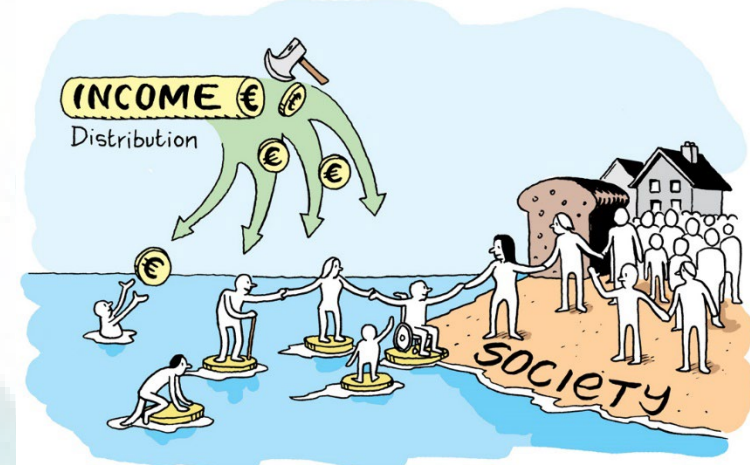


Housing and Homelessness (p8)

- Increase investment in social housing - **€1,400m**
- End the Help to Buy Scheme, and invest in Housing First and homelessness prevention - **€200m**
- Introduce taxes on empty homes and underdeveloped land - **€100m**
- Invest in services and infrastructure to support social housing—**€100m**
- Take an equity stake in mortgaged properties with arrears in excess of 10 years—**€100m**
- Increase spending on private rent inspections and increase tenant protections—**€13m**

Work and Social Welfare (p9)

- Move the National Minimum Wage towards the real Living Wage
- Increase resources for training, upskilling and higher education
- Increase the two main tax credits by €5 per week - **€670.8m**
- Increasing core social welfare rates by €25 per week—**€1,047m**
- Extend the Fuel Allowance to WFP recipients—**€44.5m**
- Equalise Jobseekers' rates for under-25s—**€63m**



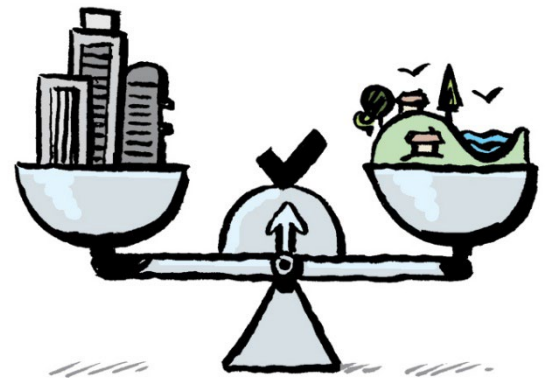
Community (p10)

- Adequately resource the Community Services Programme - **€6.2m**
- Increase funding for the Community and Voluntary sector—**€50m**
- Increase funding for PPNs - **€3m**
- Support for L.A. Integration Officers —**€2m**
- Increase funding for Community Sports—**€2m**
- Fund CSO ‘Forecasting for Change’ population projections—**€0.5m**



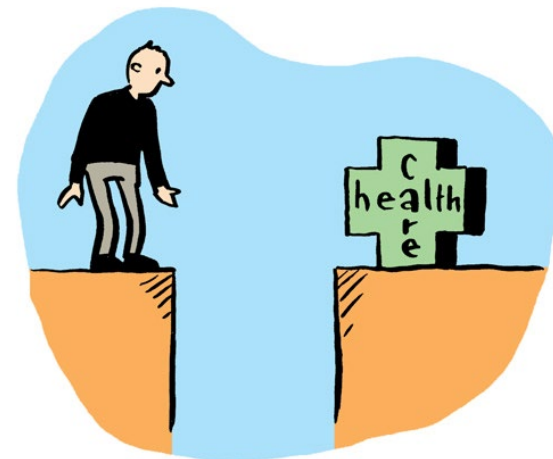
Rural Ireland and the Regions (p10)

- Allocate funding to Regional Development and Transition - **€100m**
- Extra funding for Enterprise Ireland with a rural focus - **€25m**
- Extra funding for Failte Ireland - **€25m**
- Continued roll-out of rural broadband and remote hubs - **€200m**
- Increase funding for rural transport - **€60m**



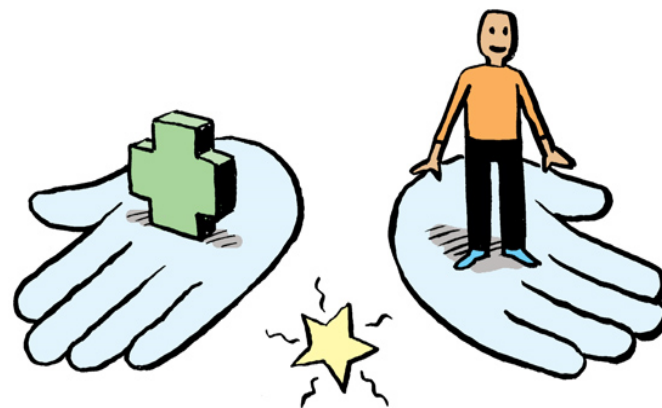
Health (p11)

- Further investment in Enhanced Community Care —**€100m**
- Invest the infrastructure allocation set out in Sláintecare —**€600m**
- Invest in providing Universal Access to GP and Community Health Networks—**€100m**
- Invest **€50m** in Community Nursing Facilities and rehabilitation beds.
- Implement the Connecting for Life suicide prevention strategy- **€7m**



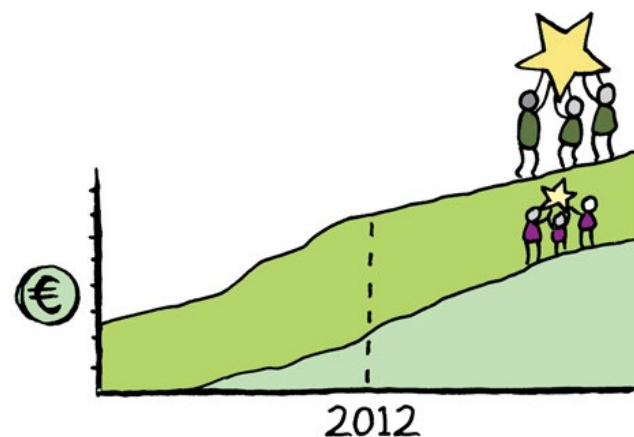
Disability & Carers (p11)

- Restore cuts to disability services in full.
- Introduce a Cost of Disability Payment - **€227m**
- Increase investment in disability services, including respite and PA services - **€40m**
- Increase Domiciliary Care Allowance - **€14.3m**
- Expand Free Travel Scheme to DCA recipients - **€6.1m**
- Increase the Carer's Support Grant - **€20.9m**



Education (p12) (i)

- Invest in higher education—**€140m**
- Invest in further education and increase apprenticeships—**€40m**
- Increase the Maintenance Grant for full-time students at third level—**€61m**
- Fund apprenticeship programmes focused on Travellers—**€2m**
- Increase employers' contribution through the National Training Fund Levy—**€74m**



Education (p12) (ii)

- Increase funding for training and skills development—**€74m**
- Restore the Back-to-School Clothing and Footwear Allowance - **€18m**
- Increase the School Meals Programme - **€6.5m**
- Increase capitation grants by 5% at primary and secondary level - **€10.4m**
- Increase support for DEIS schools—**€15m**
- Reduce the Pupil-to-Teacher Ratio at primary level—**€20.5m**



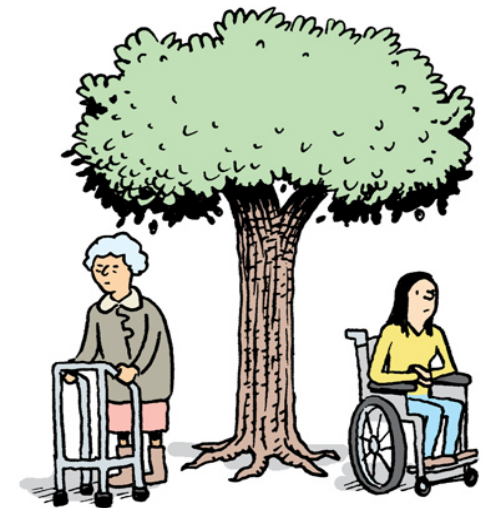
Children (p12)

- Increase Child Benefit by €50 per month - **€740m**
- Move investment in ECCE towards OECD average - **€283.6m**
- Core funding for Childcare Workers (non-contact time)- **€30m**
- Increased funding to Tusla for child protection and social provision for children- **€46.7m**
- Begin implementation of the EU Child Guarantee Strategy—**€3.5m**
- Increase refuge spaces and supports for victims of Domestic, Sexual and Gender-based Violence—**€181.5m**



Older People (p13)

- Implement Universal State Social Welfare Pension - **€1,481m**
- Invest in social care, including Home Care Packages - **€96.4m**
- Restore cuts to Housing Aid for Older People and People with Disabilities - **€85m**
- Additional funding for nursing homes - **€27.3m**
- Increase funding to community supports—**€50m**
- Establish a National Safeguarding Authority—**€3m**



Just Transition (p14)

- Implement aviation tax on commercial air travel—**€215m**
- Ensure adequate funding is provided for a Just Transition—**€166m**
- Introduce a Windfall Tax on energy suppliers / oil companies—**€100m**
- Aggregate levy of €2.50 per tonne - **€75m**
- Adequate funding for renewable energy programmes and Community Advisors - **€100m**
- Invest in National Biodiversity Centre - **€10m**
- Implement a Circular Economy Package - **€10m**
- Integrate a Sustainable Development Framework into economic policy and develop a new National Index of Progress and allocate 0.1% GNI* annually for climate research - **€283.6m.**



International Protection (p16)

- Increase payments to adults and children in Direct Provision - **€51m**
- Fund a Vulnerability Assessment as provided for in the White Paper on the Elimination of Direct provision: **€2m**
- Deliver appropriate accommodation as per the White Paper, with an **initial investment of €500m**
- Develop skills assessment, harmonisation and integration supports for international protection applicants - **€1m**



Overseas Development Assistance (ODA) (p16)

- Overall package of €1 billion to include:
 - Move to 0.5% GNI* on ODA
 - Separate allocation to Climate Finance in line with 2015 commitments
 - Set aside allocation for Loss and Damage Fund as per COP 27
- Ring-fence costs of Ukrainian response as separate to ODA
- €1 billion World Hunger allocation from Windfall Surpluses

UN Target



0.7% GNP

to Overseas
Development
Assistance

A new Social Contract

Vibrant economy	Decent services and infrastructure	Just taxation	Good governance	Sustainability
Deal with the Deficit and ensure Financial Stability	Increase Investment	Increase the Overall Tax-Take	Open, Transparent and Accountable Structures	Climate Justice and Environmental Protection
Boost Public Investment	Quality Services	Taxation Governance	Social Dialogue	Balanced Regional Development
Decent Jobs and Reducing Inequality	Minimum Social Floor	Broader Tax Base	Real Participation / Deliberative Democracy	Sustainable Progress Index

Summary of Key Policy Goals and Investment Packages (p18)

Vibrant Economy

- Windfall: €5 billion
- Housing: €170.3m
- Pensions and Older People: €1,143.7m
- Rural and Regional Development: €667.9m

Decent Services and Infrastructure

- Health, Disability and Carers: €942.3m
- Education: €402.4m
- Children and Families: €1,147.7m

Just Taxation

- Capital and Corporate Taxation: €2,191m
- Increase to Income Tax Credits: €670.8m

Good Governance

- Community: €77.9m (included in Rural and Regional Development package)

Sustainability

- Just Transition: €339.6m

Thank You

#SocialJusticeMatters

#Budget2024



Graphic Reportage by Philip Barrett

Philip.barrett@gmail.com

www.blackshapes.com

+353 87 744 9967