



SOCIAL
JUSTICE
IRELAND

working to build a just society

Social Justice Matters 2026 Annex
Income and Income Distribution



Annex 3 – Income and Income Distribution

To accompany Chapter 3 of our Socio-Economic Review *Social Justice Matters 2026*, this annex outlines details of the composition of poverty in Ireland over recent years alongside offering an overview of Ireland’s income distribution over the past four decades. It also reviews the process by which the basic social welfare payment became benchmarked to 30 per cent of Gross Average Industrial Earnings. The material underpins the development of many of the key policy priorities we have outlined in Chapter 3.

Poverty - Who are the poor?

Two interchangeable phrases have been used to describe those living on incomes below the poverty line: ‘*living in poverty*’ and ‘*at risk of poverty*’. The latter term is the most recent, introduced following a European Council meeting in Laeken in 2001 where it was agreed that those with incomes below the poverty line should be termed as being ‘at risk of poverty’. The results of the *SILC* survey provided a breakdown of those below the poverty line. This section reviews those findings and provides a detailed assessment of the depth of poverty (the poverty gap) and the different groups living on an income below the poverty line.

Table A3.1 presents figures for the risk of poverty facing people when they are classified by their principal economic status (the main thing that they do). These risk figures represent the proportion of each group that are found to be in receipt of a disposable income below the 60 per cent median income poverty line.

In 2025, the groups within the Irish population that were at highest risk of poverty included the unemployed and those permanently unable to work due to a long-term illness or a disability. About three in every ten of those classified as ‘fulfilling domestic tasks’ (formerly ‘on home duties’), mainly women, have an income below the poverty line. The ‘student/pupil’ category represents a combination of individuals living in families experiencing poverty while completing their secondary education and those attending post-secondary education but with low incomes. The latter element of this group is not a core policy concern, given that they are likely to only experience poverty while they gain education and skills which should ensure they live with sufficient income subsequently. Those still in school and experiencing poverty are more aligned to the issue of child poverty, which is examined later in this annex.

Table A3.1: Risk of Poverty Among all Persons Aged 16yrs+ by Principal Economic Status, 2005-2025

	2005	2010	2015	2020	2025
Employed	6.9	5.7	5.7	6.3	5.7
Unemployed	40.2	27.3	41.0	32.0	29.3
Retired	20.0	8.8	12.7	9.0	14.9
LT Ill/Disabled	40.4	19.8	33.5	30.2	28.4
Student/pupil	29.3	22.7	32.6	21.8	17.4
Fulfilling domestic tasks	27.0	19.5	24.1	20.9	29.1
Total Population	18.3	14.7	16.3	12.8	12.6

Source: CSO online database.

Despite an increase in poverty between 2010 and 2015 (see Chapter 3), the table also reveals the groups which have driven the overall reduction in poverty over the period (falling from 18.3 per cent in 2005 to 12.6 per cent in 2025). Comparing 2005 and 2025, the only group to experience an increase was those working in the home. Among all others the poverty rate has fallen, although the biggest changes have been for students/pupils and those permanently unable to work due to a long-term illness or a disability.

The poverty gap

As part of the 2001 Laeken indicators, the EU asked all member countries to begin measuring their relative ‘at risk of poverty gap’. This indicator assesses how far below the poverty line the income of the median (middle) person in poverty is. The size of that difference is calculated as a percentage of the poverty line and therefore represents the gap between the income of the middle person in poverty and the poverty line. The higher the percentage figure, the greater the poverty gap and the further people are falling beneath the poverty line. As there is a considerable difference between being 2 per cent and 20 per cent below the poverty line, this insight is significant.

Table A3.2: The Poverty Gap, 2005-2025

	2005	2010	2015	2020	2025
Poverty gap size	20.5	17.7	16.5	14.8	16.0

Source: CSO online database.

The *SILC* results for 2025 show that the poverty gap was 16 per cent, an increase from 2020. Over time, the gap had decreased from a figure of 20.5 per cent in 2005 which represents its peak in the *SILC* data.

The 2025 poverty gap figure implies that 50 per cent of those in poverty had an equivalised income below 84 per cent of the poverty line. An examination by Collins, covering the period 2008-17, highlighted that most people in poverty live on an income some distance below the poverty thresholds outlined in Table 3.1. He found that on average those below the poverty line had an income of around €55 per week (€2,900 per year) below that line (2020: 15-19).

As the depth of poverty is an important issue, we will monitor closely the movement of this indicator in future editions of the *SILC*. It is crucial that, as part of Ireland’s approach to addressing poverty, this figure further declines in the future.

The working poor

Having a job is not, of itself, a guarantee that one lives in a poverty-free household. As table A3.1 indicates, 5.7 per cent of those who are at work are living at risk of poverty. Over time poverty figures for the working poor have remained more-or-less static, reflecting a persistent problem with low earnings. In 2025, almost 150,000 people in employment were still at risk of poverty.¹ This is a remarkable statistic, and it is important that policy better recognises and addresses this problem.

¹See table 3.4.

Many working families on low earnings struggle to achieve a basic standard of living. Policies which protect the value of the minimum wage and attempt to keep those on that wage out of the income tax net are relevant policy initiatives in this area. Similarly, attempts to highlight the concept of a ‘living wage’ (see section 3.2) and to increase awareness among low income working families of their entitlement to the Working Family Payment (WFP) (formerly known as Family Income Supplement (FIS)) are also welcome; although evidence suggests that FIS and WFP had/have a very low take-up and as such this approach has questionable long-term potential. However, one of the most effective mechanisms available within the present system to address the problem of the working poor would be to make tax credits refundable. We have addressed this proposal in Chapter 4 of this review.

A report from Collins and Elliott O’Dare (2022) provided an updated insight into the scale and composition of low pay in Ireland. The research found that low pay was most common among: female workers; young workers; those in retail, hotels and security sectors; single parents; and those on temporary contracts. Looking at the household level, the paper also found that a higher proportion of low paid employees are living in households that struggle financially, borrow for day to day living costs, and experience deprivation.

Child poverty

Children are one of the most vulnerable groups in any society. Consequently, the issue of child poverty deserves particular attention. Child poverty is measured as the proportion of all children aged 17 years or younger that live in households with an income below the 60 per cent of median income poverty line. The 2025 *SILC* survey indicates that 16.9 per cent of this group were at risk of poverty. As Table A3.3 shows, there has been a welcome reduction in this number over most of the last two decades – driven in particular by targeted welfare payments for families.

Table A3.3: The Risk of Poverty Among Children in Ireland, 2005-2025

	2005	2010	2015	2020	2025
Poverty rate	22.9	18.4	18.4	16.0	16.9

Source: CSO online database.

Translating the data in table A3.3 into numbers of children implies that in 2025 around 210,000 children lived in households that were experiencing poverty.² The scale of this statistic is alarming, and this situation is not acceptable. Furthermore, the fact that such a large proportion of our children are living below the poverty line has obvious implications for the education system, for the success of these children within it, for their employment prospects in the future, and for Ireland’s social and economic performance in the long-term.

There are a series of policy measures needed to engage in a more significant way with the issue of child poverty. Child benefit remains a key route to tackling child poverty and is of particular value to those families on the lowest incomes. Similarly, providing targeted help to low income families via increases to the Child Support Payment (formerly the qualified child increase) or

²See table 3.4.

additional child benefit payments is worthwhile and effective. Measures to offset the costs low-income families with children face are also welcome and more are needed. Recent initiatives on free school books, school meals and free childcare are welcome but more is needed if we are to finally commence a sustainable reduction in child poverty levels.

Older people

According to the CSO's 2022 *Census Results* there were 726,232 people aged over 65 years in Ireland in 2022. The CSO noted that this age group experienced a 22 per cent increase with the highest increase in the population seem among the over 70s and the number of people aged 85 years and over increasing by one quarter. Of those in this age group, more than a quarter live alone (25.9 per cent) with this rate rising to 44 per cent for those aged 85 and over. When looked at by gender 30 per cent of women aged over 65 live alone versus 21 per cent of men (CSO, 2023).

When poverty is analysed by age group the 2025 figures show that 14.8 per cent of those aged above 65 years live in relative income poverty. However, the CSO also report that without the temporary cost of living measures in that year the rate would have been 20.7 per cent. As these measures have been discontinued, the true picture of older person poverty will reveal itself in future data and this is a notable concern.

Table A3.4: Percentage of Older People (65yrs+) Below the 60 Per Cent Median Income Poverty Line, 1994-2025

	1994	1998	2001	2005	2010	2015	2020	2025
Aged 65 +	5.9	32.9	44.1	19.4	8.7	10.6	9.1	14.8

Source: Whelan et al (2003: 28) and CSO online database.

Among all those in poverty, the retired have experienced the greatest volatility in their poverty risk rates. As table A3.4 shows, in 1994 some 5.9 per cent of this group were classified as at risk of poverty; by 1998 the figure had risen to 32.9 per cent and in 2001 it peaked at 44.1 per cent. The most recent data record relatively lower rates, with the reductions driven by increases in old age pension and targeted welfare payments (Collins, 2025). While these decreases are welcome, it remains a concern that so many of this country's senior citizens are living on so little.

The Ill /People with a Disability

As table A3.1 shows, those not employed due to a long-term illness or a disability are one of the groups at highest risk of poverty with one in three of this group (28.4 per cent) classified in this category. Much like the experience of Ireland's older people, the situation of this group has varied significantly over the last two decades. The group's risk of poverty climbed from approximately three out of every ten persons in 1994 (29.5 per cent) to over six out of every ten in 2001 (66.5 per cent) before decreasing to approximately two out of every ten in the period 2008-2014. The most recent figures, for 2015-2025, mark another notable increase.

As with other welfare dependent groups, these fluctuations parallel a period where policy first let the value of payments fall behind wage growth, before ultimately increasing them to catch-up.

Overall, although those not at work due to illness or a disability only account for a small

proportion of those in poverty, their experience of poverty is high. Furthermore, given the nature of this group *Social Justice Ireland* believes there is an on-going need for targeted policies to assist them. These include job creation, retraining (see Chapter 5 on work) and further increases in social welfare supports.

There is also a very strong case to be made for introducing a non-means tested cost of disability allowance and we welcome recent moves to give greater policy consideration to this issue. A report by Indecon (2021), commissioned by the Department of Social Protection, entitled *The Cost of Disability in Ireland* provides an estimate of the overall average annual cost of disability for Ireland. The report estimated that this ranges from €9,482 to €11,734 per annum (€180-€225 per week) with the cost estimated related to the severity of limitation and the type of disability. These estimates are outlined in Table A3.5. The report stresses how these estimates are averages across populations of individuals with potentially different needs, different circumstances and different costs. In the context of how policy should respond to these costs, the Indecon report notes that “there is a need for the state to provide supports to individuals with disabilities via a range of supports including income supplements, needs assessed grants and direct service provision” (Indecon, 2021: 115).

Table A3.5: Average Additional Costs of Disability, € per year

	<i>Lower-Bound</i>	<i>Upper-Bound</i>
Average Cost of Disability - all types, all severities	9,482	11,734
Average Cost of Disability - by limitation		
Severely Limited	13,159	16,284
Limited	8,525	11,579
By Disability Type		
Blindness or a serious vision impairment	10,997	13,609
Deafness or serious hearing loss	10,119	12,523
Difficulty with basic activities like walking, stairs, reaching, lifting or carrying	10,756	13,311
An intellectual disability	10,592	13,107
A developmental disability like autism or ADHD	11,659	14,428
A difficulty with learning, remembering or concentrating	11,045	13,669
A mental health, psychological or emotional condition or issue	10,708	13,251
Digestive disorder (e.g. Crohn's disease or bowel problems)	11,966	14,809
A difficulty with pain breathing or other chronic illness/condition	11,179	13,835
Any other chronic illness or condition	11,187	13,844

Source: Indecon (2021: 116)

Social Justice Ireland believes that these cost of disability estimates highlight the need for a comprehensive policy response. Further investment in disability services and grants are essential, and so too is the provision of a weekly cost of disability payment. The latter proposal, which has been advocated by the Disability Federation of Ireland (DFI) for many years, would provide an extra weekly payment to somebody living with a disability (calculated on the basis of the severity of their disability). It seems only logical that if people with a disability are to be

equal participants in society, the extra costs generated by their disability should not be borne

by them alone. Society at large should act to level the playing field by covering these extra but ordinary costs.

Poverty and education

The *SILC* results provide an interesting insight into the relationship between poverty and completed education levels. Table A3.6 reports the risk of poverty by completed education level and shows, as might be expected, that the risk of living on a low income is strongly related to low completed education levels. These figures underscore the relevance of continuing to address the issues of education disadvantage and early-school leaving (see Chapter 8). Government education policy should ensure that these high-risk groups are targeted. The table also suggests that when targeting anti-poverty initiatives, a large proportion should be aimed at those with low education levels, including those with low levels of literacy.³

Table A3.6: Risk of Poverty Among all Persons Aged 16yrs+ by Completed Education Level, 2005-2025

	2005	2010	2015	2020	2025
Primary or below	29.0	16.3	22.7	16.8	24.0
Lower secondary	22.5	18.2	22.6	17.8	20.9
Upper secondary	15.8	14.4	19.4	15.1	11.6
Post leaving certificate	10.2	12.2	15.8	14.9	10.9
Third level non-degree	8.0	7.3	9.1	6.4	11.9
Third level degree or higher	5.0	6.7	5.1	4.2	5.6
Total Population	18.3	14.7	16.3	12.8	12.6

Source: Adapted from CSO online database.

Poverty by region and area

The availability of poverty estimates by region has been inconsistent over recent years. The most recent *SILC* results provide a breakdown using just three regional classifications but did not provide a breakdown for the eight regional classifications (Dublin, Mid-West, South-East etc). Given the relevance of spatial issues to the assessment of progress and societal fairness, we hope this deficit will be addressed in future *SILC* publications. The available data, presented in table A3.7, suggests an uneven national distribution of poverty.

Using the latest results, the *SILC* survey found that poverty levels are below the national average in the Eastern and Midlands region and equal to the national average in the Southern region. The highest rates are in the Northern and Western region where one in five live on an income below the poverty line. This is the area corresponding to counties along the border (Donegal, Sligo, Leitrim, Cavan and Monaghan) plus Galway, Mayo and Roscommon. The table also reports that the risk of poverty is higher in urban areas compared to rural areas, although the difference is small. In 2025, the risk of poverty in urban Ireland was 1.2 percentage

³We address the issues of unemployment and completed education levels in Chapter 5 and adult literacy in Chapter 8.

points higher than in rural Ireland with at risk rates of 12.9 per cent and 11.7 per cent respectively.

Table A3.7: Risk of Poverty by Region and Area, 2005-2025

	2005	2010	2015	2020	2025
Northern and Western	<i>n/a</i>	<i>n/a</i>	<i>n/a</i>	19.4	20.4
Southern	<i>n/a</i>	<i>n/a</i>	<i>n/a</i>	14.2	12.6
Eastern and Midland	<i>n/a</i>	<i>n/a</i>	<i>n/a</i>	9.7	9.6
Urban areas	15.9	12.5	15.3	13.0	12.9
Rural areas	22.2	18.1	18.3	12.5	11.7
Total Population	18.3	14.7	16.3	12.8	12.6

Source: CSO online database.

The incidence of poverty

Figures detailing the incidence of poverty reveal the proportion of all those in poverty that belong to particular groups in Irish society. Tables A3.8 and A3.9 report all those below the 60 per cent of median income poverty line, classifying them by their principal economic status (i.e. the main thing people do). The first table examines the population as a whole, including children, while the second table focuses exclusively on adults.

Table A3.8: Incidence of Persons Below 60% of Median Income by Principal Economic Status, 2005-2025

	2005	2010	2015	2020	2025
Employed	15.7	13.5	13.7	21.5	21.6
Unemployed	7.5	15.1	14.2	9.6	7.4
Retired	7.5	4.4	7.3	8.3	15.8
LT Ill/Disabled	7.9	5.4	8.4	10.3	9.1
Student/Pupil	13.4	12.3	15.4	12.5	9.9
Fulfilling domestic tasks	19.7	17.3	14.8	9.3	8.8
Other	1.6	<i>n/a</i>	1.9	2.3	1.9
Children under 16 years of age	26.7	<i>n/a</i>	24.3	26.2	25.5
Total	100.0		100.0	100.0	100.0

Source: CSO SILC Reports (various years).

Note: Decomposition for children unavailable for 2010.

Table A3.8 shows that in 2025, the largest group of the population who are at risk of poverty, accounting for just over one-quarter of the total, were children. The second largest group are those at work (21.6 per cent) while the third largest group were the retired (15.8 per cent). Of all those who are at risk of poverty, 29 per cent were in the labour force and the remainder were outside the labour market.

Table A3.9 looks at adults only and provides a more informed assessment of the nature of poverty. This is an important perspective as in general children depend on adults for their

upbringing and support. Irrespective of how policy interventions are structured, it is through adults that any attempts to reduce the number of children in poverty must be directed. The table shows that in 2025 just over three in ten of Ireland's adults with an income below the poverty

line were employed. Overall, 42 per cent of adults at risk of poverty in Ireland were associated with the labour market.

The incidence of being at risk of poverty amongst those in employment is particularly alarming. Many people in this group do not benefit from Budget changes in welfare or income tax. They would be the main beneficiaries of any move to make the two main income tax credits refundable, a topic addressed in Chapter 4.

Table A3.9: Incidence of Adults (18yrs+) Below 60% of Median Income by Principal Economic Status, 2005-2025

	2005	2010	2015	2020	2025
Employed	<i>n/a</i>	<i>n/a</i>	19.5	31.0	31.2
Unemployed	<i>n/a</i>	<i>n/a</i>	20.2	13.9	10.7
Retired	<i>n/a</i>	<i>n/a</i>	10.4	12.0	22.8
LT Ill/Disabled	<i>n/a</i>	<i>n/a</i>	11.9	14.9	13.1
Student (18 yrs +)	<i>n/a</i>	<i>n/a</i>	14.3	11.5	6.8
Fulfilling domestic tasks	<i>n/a</i>	<i>n/a</i>	21.0	13.4	12.7
Other	<i>n/a</i>	<i>n/a</i>	2.7	3.3	2.7
Total	<i>n/a</i>	<i>n/a</i>	100.0	100.0	100.0

Source: CSO SILC Reports (various years).

Note: Decomposition can only be calculated from 2012 onwards.

Deprivation: food and fuel poverty

Chapter 3 outlines recent data from the *SILC* survey on deprivation. To accompany this, we examine two further areas of deprivation associated with food poverty and fuel poverty.

Food poverty

While there is no national definition or measure of food poverty, a number of reports have examined it and its impact. A 2004 report entitled *Food Poverty and Policy* considered food poverty as “the inability to access a nutritionally adequate diet and the related impacts on health, culture and social participation” (Society of St. Vincent de Paul et al, 2004). That report, and a later study entitled *Food on a Low Income* (SafeFood, 2011), reached similar conclusions and found that the experience of food poverty among people with low incomes was that they: eat less well compared to better off groups; have difficulties accessing a variety of nutritionally balanced good quality and affordable foodstuffs; spend a greater proportion of their weekly income on food; and may know what is healthy but are restricted by a lack of financial resources to purchase and consume it.

Carney and Maitre (2012) returned to this issue and used the 2010 *SILC* data to construct a measure of food poverty based on the collected deprivation data. They measured food poverty

and profiled those at risk of food poverty using three deprivation measures: (i) inability to afford a meal with meat or vegetarian equivalent every second day; (ii) inability to afford a roast or vegetarian equivalent once a week; (iii) whether during the last fortnight there was at least one day when the respondent did not have a substantial meal due to lack of money. An individual who experienced one of these deprivation measures was counted as being in food poverty (2012: 11-12, 19). Carney and Maitre's examination for 2010 found that one in ten of the population experienced at least one of the food poverty/deprivation indicators; approximately 450,000 people. They found that those most at risk of food poverty are households in the bottom 20 per cent of the income distribution, households where the head of household is unemployed or ill/disabled, households who rent at less than the market rent (often social housing), lone parents, and households with three adults and children (2012: 29, 38-39). Related results from the 2014 *Irish Health Behaviour in School-aged Children (HBSC) survey* found that one in five children (22 per cent) go to school or bed hungry because there is no food at home (Gavin et al, 2015).

Table A3.10: Percentage experiencing Food-related Deprivation, 2025

	Unable to afford a roast once a week	Unable to afford a meal with meat chicken or fish every second day
State	4.8	1.7
Age Group		
0-17	5.6	2.3
18-34	5.7	1.8
35-49	4.9	1.3
50-64	4.7	1.8
65+	2.5	1.3
Principle Economic Status		
Employed	2.5	0.6
Unemployed	15.5	7.0
Retired	2.5	1.3
LT Ill/Disabled	23.2	9.1
Student/pupil	4.3	1.3

Source: CSO SILC Reports / Enforced Deprivation Reports (various years).

The CSO have commenced published indicators of food deprivation and security as part of their publications on Ireland's performance on the Sustainable Development Goals (SDGs) and their annual assessment of Enforced Deprivation. Table A3.10 presents the latest published results on food deprivation, which focus on the two food-related items measured in the annual assessment of deprivation (see Chapter 3). Although the rates of food-related deprivation are low, the table does highlight the relatively higher rates experienced by children and young adults, those who are unemployed and those with a long-term illness or disability which prevents them from working.

The results of these studies point towards the reality that many households face making ends meet, given their limited income and challenging living conditions in Ireland today. They also underscore the need for added attention to the issue of food poverty.

Fuel poverty

Deprivation of heat in the home, often also referred to as fuel poverty, is another area of deprivation that has received attention in recent times including added focus during the cost-of-living crisis. A 2007 policy paper from the Institute for Public Health (IPH) entitled *Fuel Poverty and Health* highlighted the sizeable direct and indirect effects on health of fuel poverty. Overall, the IPH found that the levels of fuel poverty in Ireland remain “unacceptably high” and that they are responsible for “among the highest levels of excess winter mortality in Europe, with an estimated 2,800 excess deaths on the island over the winter months” (2007:7). They also highlighted the strong links between low income, unemployment and fuel poverty with single person households and households headed by lone parents and pensioners found to be at highest risk. Similarly, the policy paper shows that older people are more likely to experience fuel poverty due to lower standards of housing coupled with lower incomes.

Subsequently, the Society of St Vincent de Paul’s (SVP) has defined energy poverty as the inability to attain an acceptable level of heating and other energy services in the home due to a combination of three factors: income, energy price, and energy efficiency of the dwelling. The 2025 *SILC* study found that 7.5 per cent of individuals were without heating at some stage in that year; a figure which is 22.5 per cent for those in poverty (see table 3.8). Given recent trends in energy costs, there is a worrying potential for a significant increase in fuel poverty in 2025-2027, particularly when all the short-term cost-of-living supports are removed.

The SVP points out that households in receipt of energy-related welfare supports account for less than half of the estimated energy poor households and over time these payments have been cut while fuel prices and carbon taxes have increased. Clearly, welfare payments need to address energy poverty. Other proposals made by the SVP include detailed initiatives on issues such as: the prevention of disconnections; investing in energy efficiency measures in housing; education and public awareness to promote energy saving; and the compensation of Ireland’s poorest households for the existing carbon tax.⁴

Social Justice Ireland welcomed the publication of an Energy Poverty Action Plan by Government in 2022 (Department of the Environment, Climate and Communications, 2022) which estimated that 29 per cent of Irish households lived in fuel poverty. While Government have made some inroads in addressing low-income household energy issues through funding a local authority retrofitting campaign, progress to date has been less than ideal given the scale of the problem and its implication for the health and wellbeing of many low-income families. Clearly, addressing this issue, like all issues associated with poverty and deprivation, requires a multi-faceted approach. The proposals presented by the SVP should form the core of achieving success with any current or future fuel poverty strategy.

The experience of poverty: Minimum Income Standards

A 2012 research report from the Vincentian Partnership for Social Justice (VPSJ) and Trinity College Dublin cast new light on the challenges faced by people living on low incomes in Ireland (Collins et al, 2012). Entitled *A Minimum Income Standard for Ireland*, the research established the cost of a minimum essential standard of living (MESL) for individuals and households across the entire lifecycle, from children to pensioners. Subsequently the study

⁴We address these issues further in the context of a carbon tax in Chapter 4.

calculated the minimum income households required to be able to afford this standard of living. The data in this report has been updated annually by the Vincentian MESL Research Centre and published on their website.⁵

A minimum essential standard of living is defined as one which meets a person's physical, psychological and social needs. To establish this figure, the research adopted a consensual budget standards approach whereby representative focus groups established budgets on the basis of a household's minimum needs, rather than wants. These budgets, spanning over 2,000 goods, were developed for 16 areas of expenditure including: food, clothing, personal care, health-related costs, household goods, household services, communication, social inclusion and participation, education, transport, household fuel, personal costs, childcare, insurance, housing, savings, and contingencies. These budgets were benchmarked for their nutritional and energy content, to ensure they were sufficient to provide appropriate nutrition and heat for families, and subsequently priced.

Table A3.11: Comparisons of Minimum Expenditure Levels with Net Income Levels for Selected Welfare Dependent Urban Households (€ per week) – after Budget 2026

	2A 2C 3 & 10 yrs	2A 2C 10 & 15 yrs	1A 2C 3 & 10 yrs	1A 2C 10 & 15 yrs	Single Adult	Single Pensioner
2025						
Expenditure	595.37	682.84	468.03	555.50	286.62	334.96
Income (net)	573.69	591.17	436.08	453.79	244.00	326.04
<i>Difference</i>	-21.68	-91.67	-31.95	-101.71	-42.62	-8.92
2026*						
Expenditure	613.05	703.65	482.20	572.79	293.73	344.47
Income (net)	609.37	631.77	468.35	491.13	254.00	338.92
<i>Difference</i>	-3.68	-71.88	-13.85	-81.66	-39.73	-5.55

Source: Vincentian MESL Research Centre (2025: 1)

Notes: A = adults, C = children. * forecast following Budget for this year. The Report also provides estimates for rural based households.

The study establishes the weekly cost of a minimum essential standard of living for five household types. These included: a single person of working age living alone; a two-parent household with two children; a single parent household with two children; a pensioner couple; and a female pensioner living alone. Within these household categories, the analysis distinguishes between the expenditure for urban and rural households and between those whose members are unemployed or working, either part-time or full-time. The study also established the expenditure needs of a child and how these change across childhood.

Table A3.11 summarises the most recent update of these numbers following Budget 2026. Looking at a set of welfare dependent households, the study found that when the weekly income of these households is compared to the weekly expenditure required to experience a basic

⁵ See www.budgeting.ie

standard of living, all six household types received an inadequate income. As a result of this shortfall these households have to cut back on the basics to make ends meet (Collins et al, 2012: 105-107). The comparison between 2025 and 2026 highlights how the gap between income and needs remains for all households, particularly as the short-term cost-of-living supports are withdrawn and households are left to confront the higher prices for goods and services that have evolved during the cost-of-living crisis. Overall, prices have increased much more than incomes meaning living standards are under further pressure.

These results, which complement earlier research by the VPSJ (2006, 2010), contain important implications for government policy if poverty is to be eliminated. These include the need to address child poverty, the income levels of adults on social welfare, the ‘working poor’ issue, and access to services ranging from social housing to fuel for older people and the distribution of resources between urban and rural Ireland.⁶

EU 2030 Social Targets – Risk of Poverty or Social Exclusion

As part of the *Europe 2020 Strategy*, European governments adopted policies to target these poverty levels and are using as their main benchmark the proportion of the population at risk of poverty or social exclusion. One of the five headline targets for this strategy aimed to lift at least 20 million people out of the risk of poverty or exclusion categories by 2020 (using 2008 as the baseline year). Unfortunately, despite these commitments the target was not achieved.

The European Commission returned to this issue in June 2022 when the European Council adopted a new set of Social Targets to be achieved by 2030. Three targets were adopted:

- (i) at least 78 per cent of people aged 20 to 64 should be in employment;
- (ii) at least 60 per cent of all adults should participate in training every year; and
- (iii) the number of people at risk of poverty or social exclusion should be reduced by at least 15 million, including at least 5 million children, compared to 2019.

The poverty and social exclusion target has been defined by the European Council on the basis of three indicators: those living on an income below the poverty line after social transfers; an index of material deprivation⁷; and the percentage of people living in households with very low work intensity.⁸ The number of people at risk of poverty or social exclusion is calculated as the sum of persons relative to the national population who are at risk of poverty or severely materially deprived or living in households with very low work intensity, where a person is only counted once even if recorded in more than one indicator.⁹

Table A3.12 summarises the latest data on this poverty and social exclusion target. Across the EU in 2024 there were 93.2 million people classified as being at risk of poverty or social exclusion, of these almost 900,000 were in Ireland. Children (under 18 years) accounted for almost 19.5 million of the EU total and 253,000 of that figure were recorded in Ireland. Overall,

⁶ Data from these studies are available at www.budgeting.ie

⁷ Material deprivation covers indicators relating to economic strain and durables. Severely materially deprived persons have living conditions severely constrained by a lack of resources. They experience at least 4 out of 9 listed deprivations items (Eurostat 2012).

⁸ People living in households with very low work intensity are those aged 0-59 living in households where the adults (aged 18-59) worked less than 20 per cent of their total work potential during the past year.

⁹ See European Commission (2011) for a more detailed explanation of this indicator.

limited progress has been made towards the target.

While *Social Justice Ireland* regrets that the *Europe 2030* targets have shifted its indicator focus away from an exclusive concentration on the ‘at risk of poverty’ rate, we welcome the continued attention at a European level to issues regarding poverty, deprivation and joblessness. However, the failure to reach the 2020 target underscores the need for more than token actions over the next 4 years. Also, it is worth noting that even if the EU 2030 target is achieved, it implies that 77 million Europeans would continue to experience poverty and social exclusion including 13 million children. Achieving the 2030 target would represent progress, but there would be a lot of work remaining.

Table A3.12: People at Risk of Poverty or Social Exclusion in Ireland and the EU, 2019-latest data

	2019*	2020	2021	2022	2023	2024
Ireland						
% of population	20.2	19.1	19.6	19.6	19.2	17.1
000s people	988	932	985	1,003	988	898
% of child population	25.1	22.4	23.5	22.3	24.3	20.9
000s children	303	269	281	274	293	253
EU						
% of population	21.1	21.5	21.7	21.6	21.3	21.
000s people	92,235	94,479	95,427	95,307	94,441	93,252
% of child population	22.8	24.1	24.5	24.8	24.9	24.2
000s children	18,404	19,455	19,675	20,046	19,965	19,524

Source: Eurostat online database.

Note: *The EU2030 target is set against 2019 levels

Moving to Persistent Poverty

Social Justice Ireland is committed to using the best and most up-to-date data in its ongoing socio-economic analysis of Ireland. We believe that to do so is crucial to the emergence of accurate evidence-based policy formation. It also assists in establishing appropriate and justifiable targeting of state resources.

As part of the EU structure of social indicators, Ireland has agreed to produce an indicator of persistent poverty. This indicator measures the proportion of those living below the poverty line in the current year and for two of the three preceding years. It therefore identifies those who have experienced sustained exposure to poverty which is seen to harm their quality of life seriously and to increase levels of deprivation.

To date the Irish *SILC* survey has not produced any detailed results and breakdowns for this measure. We regret the unavailability of this data and note that there remain some sampling and technical issues impeding its annual publication.

Social Justice Ireland believes that this data should be used as the primary basis for setting poverty targets and monitoring changes in poverty status. Existing measures of relative and consistent poverty should be maintained as secondary indicators. If there are impediments to the annual production of this indicator, they should be addressed and the SILC sample augmented if required. A measure of persistent poverty is long overdue and a crucial missing piece in society's knowledge of households and individuals on low income.

Ireland's income distribution: trends from 1987-2025

The results of studies by Collins and Kavanagh (1998, 2006) and CSO income figures provide a useful insight into the pattern of Ireland's income distribution over almost four decades.

Table A3.13: The Distribution of Household Disposable Income, 1987-2025 (%)

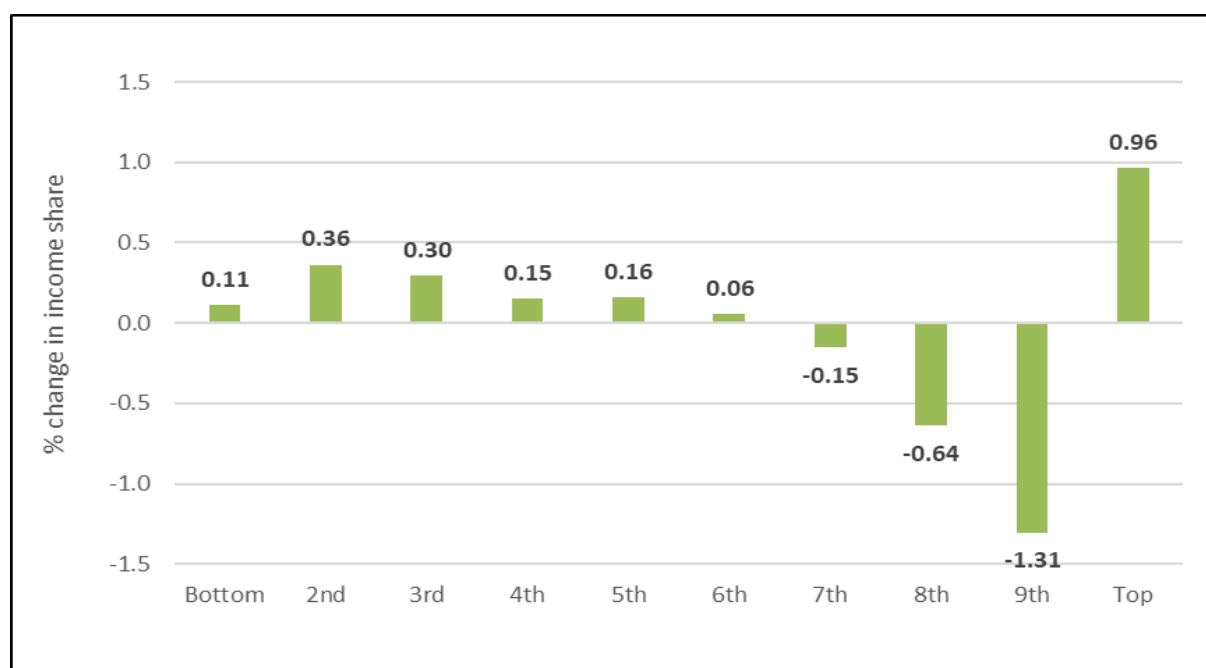
Decile	1987	1994/95	2005	2020	2025
Bottom	2.28	2.23	2.21	2.38	2.39
2nd	3.74	3.49	3.24	4.03	4.10
3rd	5.11	4.75	4.46	5.41	5.41
4th	6.41	6.16	5.70	6.71	6.56
5th	7.71	7.63	7.31	7.90	7.87
6th	9.24	9.37	9.12	9.33	9.30
7th	11.16	11.41	10.97	10.84	11.00
8th	13.39	13.64	13.23	12.67	12.75
9th	16.48	16.67	16.35	15.41	15.18
Top	24.48	24.67	27.42	25.32	25.45
Total	100.00	100.00	100.00	100.00	100.00

Source: Collins and Kavanagh (2006:156) and CSO SILC various editions.

Note: Data for 1987, 1994/95 and from the Household Budget Surveys. 2005 onwards from SILC.

Table A3.13 combines the results from these studies and reflects the distribution of household income in Ireland as tracked by five surveys. Overall, across the period 1987-2025 the income distribution is very static.

Using data from the two ends of this period, 1987 and 2025, chart A3.1 examines the change in the income distribution over the intervening years. While a lot changed in Ireland over that period, income distribution did not change significantly; the decile variations are all small. Compared with 1987, seven deciles saw their share of the total household income distribution increase, with the largest gain flowing to the top decile. These increases in income share came at the expense of small decreases in the income share received by deciles seven to nine.

Chart A3.1: Change in Ireland's Household Income Distribution, 1987-2025

Source: Calculated using data from Collins and Kavanagh (2006:156) and CSO online database.

Benchmarking Social Welfare Payments, 2001-2011

While Chapter 3 considers the current challenges associated with maintaining an adequate level of social welfare, here we examine the transition to benchmarked social welfare payments. That process centred on three elements: the 2001 *Social Welfare Benchmarking and Indexation Working Group* (SWBIG) (Department of An Taoiseach, 2001), the 2002 *National Anti-Poverty Strategy (NAPS) Review* (Government of Ireland, 2002) and the *Budgets 2005-2007*.

Social welfare benchmarking and indexation working group

In its final report the SWBIG agreed that the lowest social welfare rates should be benchmarked. A majority of the working group, which included a director of *Social Justice Ireland*, also agreed that this benchmark should be index-linked to society's standard of living as it grows and that the benchmark should be reached by a definite date. The working group chose Gross Average Industrial Earnings (GAIE) to be the index to which payments should be

linked.¹⁰ The group further urged that provision be made for regular and formal review and monitoring of the range of issues covered in its report. The group expressed the opinion that this could best be accommodated within the structures in place under the NAPS and the *National Action Plan for Social Inclusion* (now combined as *NAPinclusion*) (Government of Ireland, 2007). The SWBIG report envisaged that such a mechanism could involve:

- the review of any benchmarks/targets and indexation methodologies adopted by government to ensure that the underlying objectives remain valid and were being met;
- the assessment of such benchmarks/targets and indexation methodologies against the various criteria set out in the group's terms of reference to ensure their continued relevance;
- the assessment of emerging trends in the key areas of concern, e.g. poverty levels, labour market performance, demographic changes, economic performance and competitiveness, and
- identification of gaps in the area of research and assessment of any additional research undertaken in the interim.

National Anti-Poverty Strategy (NAPS) review 2002

In 2002, the NAPS review set the following as key targets:

To achieve a rate of €150 per week in 2002 terms for the lowest rates of social welfare to be met by 2007 and the appropriate equivalence level of basic child income support (i.e. Child Benefit and Child Dependent Allowances combined) to be set at 33 per cent to 35 per cent of the minimum adult social welfare payment rate.

Social Justice Ireland and others welcomed this target. It was a major breakthrough in social, economic and philosophical terms. We also welcomed the reaffirmation of this target in *Towards 2016* (Department of An Taoiseach, 2006). That agreement contained a commitment to 'achieving the NAPS target of €150 per week in 2002 terms for lowest social welfare rates by 2007' (2006:52). The target of €150 a week was equivalent to 30 per cent of Gross Average Industrial Earnings (GAIE) in 2002.¹¹

Table A3.14 outlines the expected growth rates in the value of €150 based on this commitment and indicates that the lowest social welfare rates for single people should have reached €185.80 by 2007.

Table A3.14: Estimating Growth in €150 a Week (30% GAIE) for 2002-2007

	2002	2003	2004	2005	2006	2007
% Growth of GAIE	-	+6.00	+3.00	+4.50	+3.60	+4.80
30% GAIE	150.00	159.00	163.77	171.14	177.30	185.80

Source: GAIE growth rates from CSO Industrial Earnings and Hours Worked (September 2004:2) and ESRI Medium Term Review (Bergin et al, 2003:49).

¹⁰The group recommended a benchmark of 27 per cent although *Social Justice Ireland* argued for 30 per cent.

¹¹GAIE is calculated by the CSO on the earnings of all individuals (male and female) working in all industries. The GAIE figure in 2002 was €501.51 and 30 per cent of this figure equals €150.45 (CSO, 2006: 2).

Budgets 2005-2007

The NAPS commitment was very welcome and was one of the few areas of the anti-poverty strategy that was adequate to tackle the scale of the poverty, inequality and social exclusion being experienced by so many people in Ireland today.

Table A3.15: Proposed Approach to Addressing the Gap, 2005-2007

	2005	2006	2007
Min. SW payment in €'s	148.80	165.80	185.80
€ amount increase each year	14.00	17.00	20.00
Delivered	✓	✓	✓

In 2002 *Social Justice Ireland* set out a pathway to reaching this target by calculating the projected growth of €150 between 2002 and 2007 when it is indexed to the estimated growth in GAIE. Progress towards achieving this target had been slow until Budget 2005. At its first opportunity to live up to the NAPS commitment the government granted a mere €6 a week increase in social welfare rates in Budget 2003. This increase was below that which we proposed and also below that recommended by the government's own tax strategy group. In Budget 2004 the increase in the core social welfare payment was €10. This increase was again below the €12 a week we sought and at this point we set out a three-year pathway (see table A3.14).

Following Budget 2004 we argued for an increase of €14 in Budget 2005. The Government's decision to deliver an increase equal to that amount in that Budget marked a significant step towards honouring this commitment. Budget 2006 followed suit, delivering an increase of €17 per week to those in receipt of the core social welfare rate. Finally, Budget 2007's decision to deliver an increase of €20 per week to the core social welfare rates brought the core social welfare payment up to the 30 per cent of the GAIE benchmark.

Social Justice Ireland believes that these increases, and the achievement of the benchmark in Budget 2007, marked a fundamental turning point in Irish public policy. Budget 2007 was the third budget in a row in which the government delivered on its NAPS commitment. In doing so, the government moved to meet the target so that in 2007 the core social welfare rate increased to €185.80 per week; a figure equivalent to the 30 per cent of GAIE.

Social Justice Ireland warmly welcomed this achievement. It marked major progress and underscored the delivery of a long overdue commitment to sharing the fruits of this country's economic growth since the mid-1990s. An important element of the NAPS commitment to increasing social welfare rates was the acknowledgement that the years from 2002-2007 marked a period of 'catch up' for those in receipt of welfare payments. Once this income gap had been bridged, the increases necessary to keep social welfare payments at a level equivalent

to 30 per cent of GAIE became much smaller. In that context we welcomed the commitment by Government in *NAPinclusion* to 'maintain the relative value of the lowest social welfare rate at least at €185.80, in 2007 terms, over the course of this Plan (2007-2016), subject to available resources' (2007:42). Whether or not 30 per cent of GAIE (or equivalent values) is adequate to eliminate the risk of poverty will need to be monitored through the *SILC* studies and addressed when data on persistent poverty emerges.

References

- Bergin, A., Cullen, J., Duffy, D., Fitzgerald, J., Kearney, I. and McCoy, D. (2003) *Medium-Term Review: 2003–2010*. Dublin: Economic and Social Research Institute.
- Carney, C. and Maître, B. (2012) ‘Constructing a food poverty indicator for Ireland using the Survey on Income and Living Conditions’, *Social Inclusion Technical Paper No. 3*. Dublin: Department of Social Protection.
- Central Statistics Office (2004) *Industrial Earnings and Hours Worked*. Dublin: Stationery Office.
- Central Statistics Office (2006) *Industrial Earnings and Hours Worked*. Dublin: Stationery Office.
- Central Statistics Office (2023) *Census 2022 Results*. Dublin: Central Statistics Office. Available at: <http://www.cso.ie/en/census/>
- Central Statistics Office (2026) *Survey on Income and Living Conditions 2025*. Dublin: Stationery Office.
- Central Statistics Office (various years) *Survey on Income and Living Conditions*. Dublin: Stationery Office.
- Collins, M.L. (2020) *The Hidden Cost of Poverty: Estimating the Public Service Cost of Poverty in Ireland*. Dublin: Society of St Vincent de Paul.
- Collins, M.L. (2025) ‘Inequality’, in O’Hagan, J., O’Toole, F. and Whelan, C. (eds) *The Economy of Ireland: Policy Making in a Global Context*. London: Bloomsbury Academic, pp. 274–298.
- Collins, M.L. and Elliott O’Dare, C. (2022) *Low Paid Older Workers: A Quantitative and Qualitative Profile of Low Pay among Workers Aged over 50*. Dublin: University College Dublin and Low Pay Commission.
- Collins, M.L. and Kavanagh, C. (1998) ‘For richer, for poorer: the changing distribution of household income in Ireland, 1973–94’, in Healy, S. and Reynolds, B. (eds) *Social Policy in Ireland: Principles, Practice and Problems*. Dublin: Oak Tree Press.
- Collins, M.L. and Kavanagh, C. (2006) ‘The changing patterns of income distribution and inequality in Ireland, 1973–2004’, in Healy, S., Reynolds, B. and Collins, M.L. (eds) *Social Policy in Ireland: Principles, Practice and Problems*. Dublin: Liffey Press.
- Collins, M.L., Mac Mahon, B., Weld, G. and Thornton, R. (2012) *A Minimum Income Standard for Ireland: A Consensual Budget Standards Study Examining Household Types across the Lifecycle*. Public Policy No. 27. Dublin: Policy Institute, Trinity College Dublin.
- Department of An Taoiseach (2001) *Final Report of the Social Welfare Benchmarking and Indexation Working Group*. Dublin: Stationery Office.
- Department of the Environment, Climate and Communications (2022) *Energy Poverty Action Plan*. Dublin: Stationery Office.
- Department of the Taoiseach (2006) *Towards 2016 – Ten-Year Framework Social Partnership Agreement 2006–2015*. Dublin: Stationery Office.
- European Commission (2011) *The Social Dimension of the Europe 2020 Strategy: A Report of the Social Protection Committee*. Luxembourg: Publications Office of the European Union.
- Eurostat (2012) *Europe 2020 Strategy – Towards a Smarter, Greener and More Inclusive EU Economy?* Luxembourg: Eurostat.

Gavin, A., Keane, E., Callaghan, M., Molcho, M., Kelly, C. and Nic Gabhainn, S. (2015) *The Irish Health Behaviour in School-Aged Children (HBSC) Study 2014*. Dublin: Department of Health; Galway: Health Promotion Research Centre, National University of Ireland Galway.

Government of Ireland (2002) *National Anti-Poverty Strategy Review*. Dublin: Stationery Office.

Government of Ireland (2007) *National Action Plan for Social Inclusion 2007–2016*. Dublin: Stationery Office.

Indecon (2021) *The Cost of Disability in Ireland: Final Report*. Dublin: Department of Social Protection and Indecon Economic Consultants.

Institute for Public Health (2007) *Fuel Poverty and Health*. Dublin: IPH.

Safefood (2011) *Food on a Low Income*. Cork: Safefood.

Society of St Vincent de Paul, Combat Poverty Agency and Crosscare (2004) *Food Poverty and Policy*. Dublin: Combat Poverty Agency.

Vincentian MESL Research Centre (2025) *MESL Impact Briefing: Budget 2026*. Dublin: Vincentian MESL Research Centre.

Vincentian Partnership for Social Justice (2006) *Minimum Essential Budgets for Six Households*. Dublin: VPSJ.

Vincentian Partnership for Social Justice (2010) *Minimum Essential Budgets for Households in Rural Areas*. Dublin: VPSJ.

Whelan, C.T., Layte, R., Maître, B., Gannon, B., Nolan, B., Watson, W. and Williams, J. (2003) *Monitoring Poverty Trends in Ireland: Results from the 2001 Living in Ireland Survey*. Policy Research Series No. 51. Dublin: Economic and Social Research Institute.

Online databases

CSO online database, web address: <http://www.cso.ie/en/databases/>

Eurostat online database, web address: <http://ec.europa.eu/eurostat>